

IDILIQ

ESTATES



R4718761

 The Golden Mile

REF# R4718761 635.000 €

BEDS

2

BATHS

2

BUILT

103 m²

TERRACE

25 m²

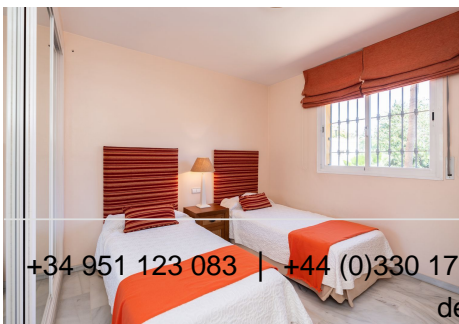
Immerse yourself in the serene elegance of Marbella's prestigious Golden Mile with this charming first-floor apartment in the esteemed El Infantado complex. Perfectly positioned to capture the warm afternoon sun, this west-facing residence offers a tranquil view over lush communal gardens—meticulously maintained and dotted with vibrant floral displays—and a lively swimming pool area. The apartment is tastefully appointed with two well-sized bedrooms and two bathrooms, reflecting a blend of comfort and modern convenience. The main highlight is a delightful covered terrace, elegantly fitted with glass curtains to provide a seamless indoor-outdoor living experience regardless of the season. Complementing the impressive amenities, residents can enjoy exclusive access to two padel tennis courts, perfect for leisure and sport amidst the beautifully landscaped grounds. Each space within this home has been thoughtfully designed to ensure maximum use of natural light, enhancing the fresh, airy feel of the interiors. The property is sold fully furnished, featuring tasteful decor that complements the serene surroundings, making it an excellent value for those seeking a turnkey solution in a prime location. With its close proximity to the beach promenade and mere steps away from Marbella's array of services including top-tier restaurants, chic boutiques, and vibrant bars and shops, El Infantado offers an unparalleled lifestyle in one of the most sought-after areas of the Costa del Sol. This residence is not just a home, but a gateway to a lifestyle of luxury and ease, ideal for

+34 951 123 083 | +44 (0)330 179 8687 | info@idiliqestates.com Local 28, Edificio D, Centro de Negocios Puerta de Banús, N-340, Km 175, 29660 Nueva Andlucia

IDILIQ

ESTATES

those who appreciate the fine balance of tranquility and vibrant city life.



+34 951 123 083 | +44 (0)330 179 8687 | info@idiliqestates.com Local 28, Edificio D, Centro de Negocios Puerta de Banús, N-340, Km 175, 29660 Nueva Andalucía

IDILIQ

ESTATES

