

IDILIQ

ESTATES



R4717228

 Aloha

REF# R4717228 435.000 €

BEDS

2

BATHS

1

BUILT

73 m²

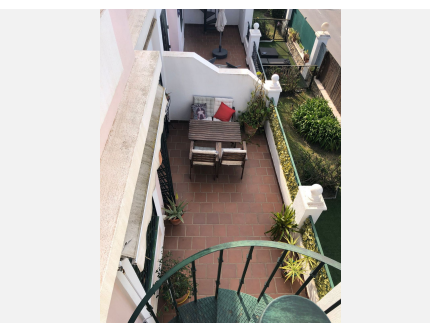
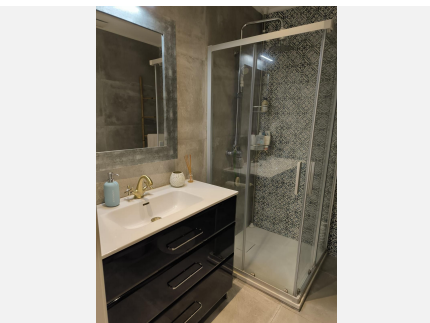
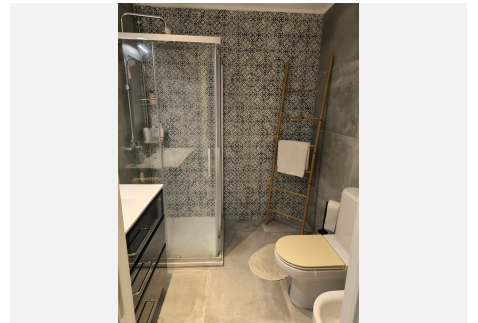
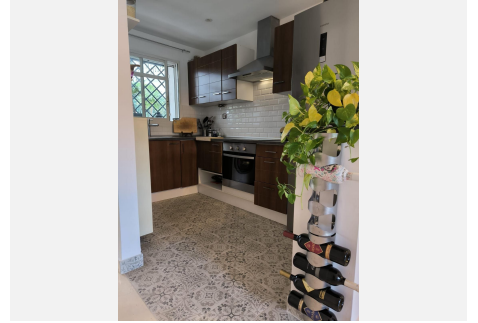
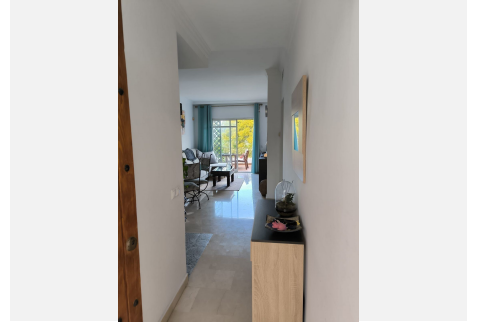
TERRACE

59 m²

ALOHA CONCHA VIEWS - 2BEDROOM DUPLEX - PARKING INCLUDED Cozy two-bedroom duplex apartment with Concha mountain views, located in well kept urbanization, just two minutes by car from Puerto Banús restaurants, bars, commercial activities and leisure, surrounded by golf courses, the urbanization has 24-hour security, beautiful gardens, 3 swimming pools, one of them heated, 1 large private parking space included in the price with the possibility of acquiring one more. LPO AVAILABLE Perfect as a holiday home, investment for holiday rentals or permanent home. Viewing is highly recommended! Duplex, Aloha, Costa del Sol. 2 Bedrooms, 1 Bathroom, Built 73 m², Terrace 59 m². Setting : Country, Close To Golf, Close To Port, Close To Shops, Close To Sea, Close To Town, Urbanisation. Orientation : North. Condition : Good. Pool : Communal, Heated. Climate Control : Air Conditioning, Hot A/C, Cold A/C. Views : Mountain, Country, Garden. Features : Covered Terrace, Fitted Wardrobes, Private Terrace, Solarium. Furniture : Fully Furnished. Kitchen : Fully Fitted. Garden : Communal. Security : Gated Complex, 24 Hour Security. Parking : Open, Private. Utilities : Electricity, Drinkable Water. Category : Holiday Homes, Investment, Resale.

IDILIQ

ESTATES



IDILIQ

ESTATES

