



R4712527

📍 Benahavís

REF# R4712527 5.995.000 €

BEDS

5

BATHS

5

BUILT

811 m²

PLOT

818 m²

TERRACE

183 m²

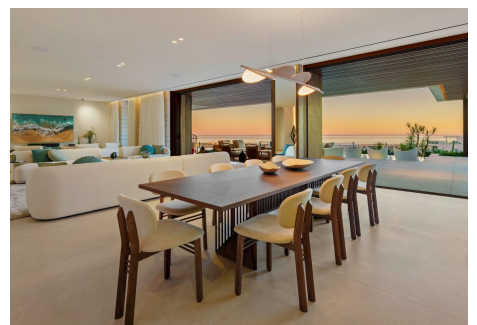
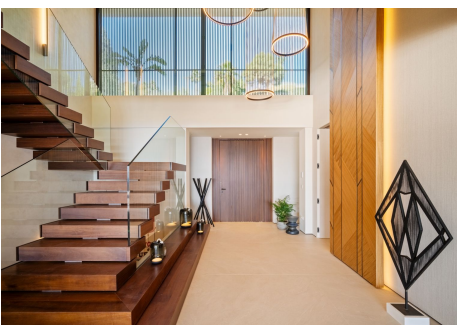
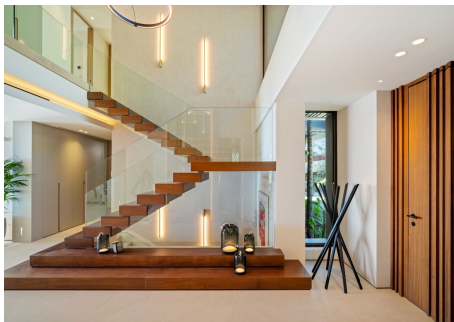
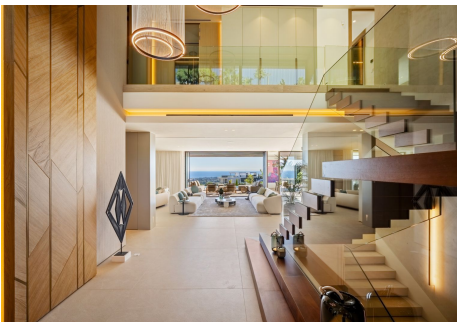
An exceptional high-end gated community of 16 villas and 50 apartments. Situated atop of La Quinta in Benahavis, on the southern edge of El Madronal, the project was designed according to the highest level of luxury living trends, as an endless dialogue between home, the sky and the sea. Unique panoramic sea and mountain views Gated community with 24h security World-class amenities Top of the line finishes by Gunni & Trentino 16 luxury villas of approx 869 m2 interior built, 1,048 m2 plot, 5-6 bedrooms 50 high-end apartments: 2, 3 and 4 bedrooms, duplex ground floor, middle floor and duplex penthouses, from 130 to 473 m2 interior build + large terraces. Each unit has its own individual pool! Prices from €1,495,000 for the apartments and €6,495,000 for the villas Already under construction Delivery dates: Villas - Q3 2026 Apartments - Q3 2027 These residences offer contemporary open-plan layouts with 2, 3, and 4 bedrooms, showcasing exceptional quality and striking finishes throughout. The property complex boasts a generous swimming pool surrounded by lush gardens, as well as state-of-the-art communal areas and amenities. The impressive architectural and interior decoration designed homes will sit within a secure, gated complex, at the highest point of the urbanization, a quiet spot surrounded by nature and offering panoramic views to the bay of Marbella and the Mediterranean Sea at only ten minutes of Puerto Banus. The stunning properties feature beautifully designed open living and dining spaces, along with a fully equipped kitchen featuring top-

+34 951 123 083 | +44 (0)330 179 8687 | info@idiliqestates.com Local 28, Edificio D, Centro de Negocios Puerta de Banús, N-340, Km 175, 29660 Nueva Andlucia

IDILIQ

ESTATES

tier appliances. The master bedroom exudes elegance and generosity, while the family bedrooms provide ample living spaces. The bathrooms showcase modern sophistication. Furthermore, a spacious terrace with a pool and two parking spaces in the communal garage complement the allure of these amazing homes. The project offers an exceptional combination of prime location, impeccable finishes, unparalleled sea views, a delightful outdoor pool, and an inviting ambiance, all complemented by designer amenities to embrace a unique quality of life.



IDILIQ

ESTATES



IDILIQ

ESTATES



IDILIQ

ESTATES

