



R4710520

📍 Sotogrande

REF# R4710520 1.790.000 €

BEDS

4

BATHS

5

BUILT

340 m<sup>2</sup>

TERRACE

192 m<sup>2</sup>

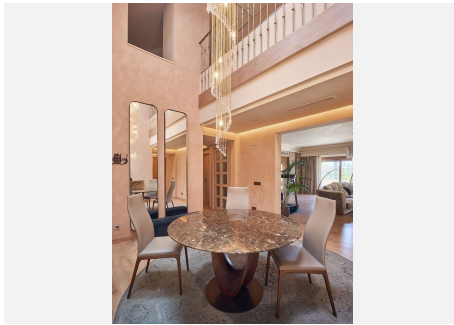
Penthouse, Sotogrande, Costa del Sol. 4 Bedrooms, 5 Bathrooms, Built 340 m<sup>2</sup>, Terrace 192 m<sup>2</sup>. Setting : Close To Golf, Close To Schools, Urbanisation. Orientation : East, South, West. Condition : Excellent.Pool : Communal.Climate Control : Hot A/C, Fireplace, U/F Heating.Views : Panoramic, Forest. Features : Lift, Fitted Wardrobes, Near Transport, Private Terrace, Gym, Games Room, Storage Room, Utility Room, Jacuzzi, Barbeque, Double Glazing, 24 Hour Reception.Furniture : Fully Furnished.Kitchen : Fully Fitted.Garden : Communal. Security : Gated Complex, Entry Phone, Alarm System, 24 Hour Security. Parking : Underground, Garage, Street, More Than One, Private. Category : Bargain, Golf. Valgrande is located in an enviable location between the golf courses of Valderrama and San Roque Club, in Sotogrande Alto, surrounded by a total of 7 golf courses (3 of which are in the top 10 in Spain). Valderrama, The Real Club de Golf de Sotogrande, La Reserva, San Roque (Old and New), Almenara, and La Cañada. In an environment of incomparable beauty and with all the amenities for leisure and sports at your fingertips. Sotogrande offers a wide range of leisure activities: international polo championships, beach clubs, restaurants, shops, and the possibility of practicing many sports. Valgrande is a private urbanization with access control and 24-hour security, making it one of the most exclusive residential developments in Spain. 166 elegantly designed luxury apartments, located on 11 hectares, five of which are well-kept gardens.

+34 951 123 083 | +44 (0)330 179 8687 | info@idiliqestates.com Local 28, Edificio D, Centro de Negocios Puerta de Banús, N-340, Km 175, 29660 Nueva Andlucia

# IDILIQ

ESTATES

Valgrande offers various housing designs, from 2-bedroom apartments to magnificent duplex penthouses. All include spacious rooms, high ceilings, aged marble floors, hydraulic underfloor heating, and individual air conditioning. Each apartment includes large and bright private terraces with carefully designed sunbathing and shaded areas. The Gardens of Valgrande are one of its hallmarks; over five hectares of carefully planned and maintained Mediterranean/tropical gardens, with native Mediterranean tree species such as pines and oaks, as well as others such as orange trees, olive trees, and palm trees, flowers, and extensive areas of well-kept lawn.



# IDILIQ

ESTATES



# IDILIQ

ESTATES

