



R4689334

 Istán

REF# R4689334 439.000 €

BEDS

2

BATHS

2

BUILT

110 m²

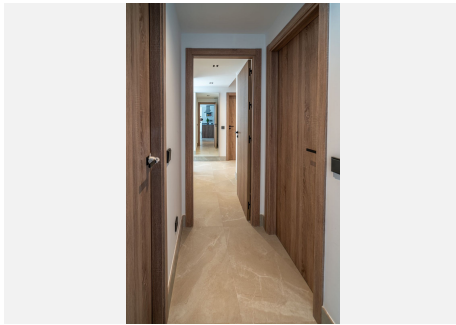
TERRACE

20 m²

UNIQUE OPPORTUNITY! Luxury and tranquility are found in this place. The panoramic views of the sea and the lake, in the mountain of La Concha de Marbella. Just 10 minutes by car from Marbella and Puerto Banús, it is located in a quiet paradise, with views of the lake, the sea and the mountains, but so close to everything that the Marbella area has to offer. An exterior ground floor that offers the luxurious, modern internal details, and at the same time the warmth of the design make this property a GREAT OPPORTUNITY. Whether you are looking for it to live or invest, its spacious rooms with built-in wardrobes, and complete bathrooms with top quality finishes will make your stay here unforgettable. All rooms have panoramic windows and access to the terrace and garden to enjoy contact with nature. A kitchen open to the living room and overlooking the extraordinary garden will make you enjoy the best moments with family or friends. The parking space has a charger for electric cars. The urbanization has sidewalks, garden areas, parking for guests and rural pedestrian paths.

IDILIQ

ESTATES



IDILIQ

ESTATES

