



R4671232

📍 Monda

REF# R4671232 595.000 €

BEDS

3

BATHS

2

BUILT

135 m²

PLOT

3500 m²

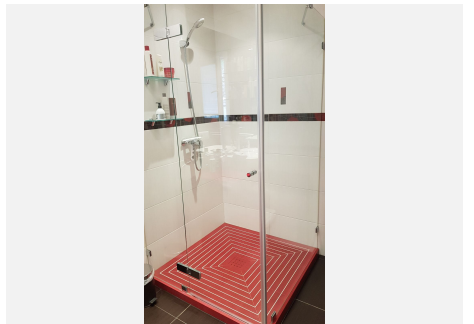
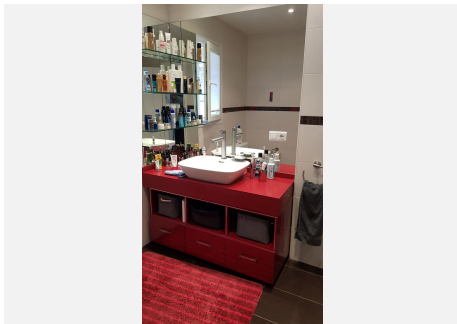
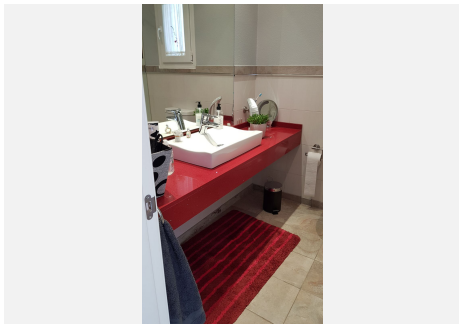
TERRACE

30 m²

This beautiful country house - built in 2012 - has a large garage with workshop (approx. 45 m²), a guest flat (approx. 45 m²) with living room and open-plan kitchen, a shower room and a separate large terrace. The living space is approx. 90 m². There are 2 bedrooms and 2 bathrooms (one en-suite) and an open-plan kitchen - very smart and only 3 years old. A large terrace of approx. 30 m² with marvellous views of the mountains as far as Málaga and the Sierra Nevada is accessible from the living room, another terrace is located behind the building. There is a private well and a large underground tank with a capacity of 11,000 litres for drinking water in case the groundwater is insufficient. A small pool - not heated, no air conditioning and no heating - just a fireplace in the living room. The plot measures approx. 3,500 square metres and is planted with olive trees, lemon trees, vines, almond trees, etc. For further information please do not hesitate to contact us Translated with DeepL.com (free version)

IDILIQ

ESTATES



IDILIQ

ESTATES

