




R4660420

 Cerros del Aguila

REF# R4660420 678.000 €

BEDS

4

BATHS

4

BUILT

277 m<sup>2</sup>

PLOT

1885 m<sup>2</sup>

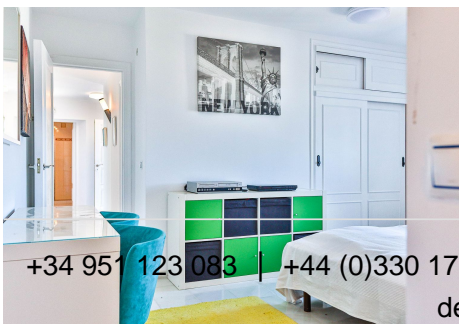
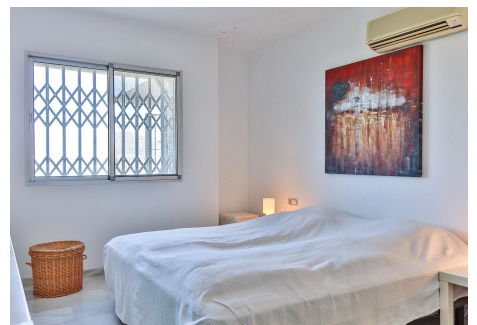
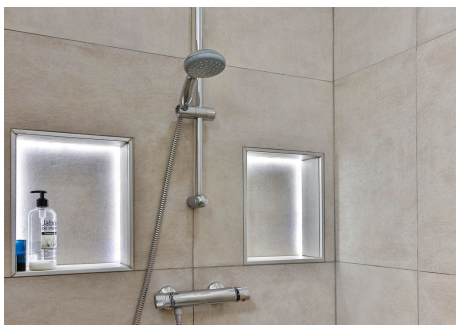
Stunning villa with some of the most extraordinary panoramic views on Costa Del Sol! This villa was designed by Danish architects and built with double walls with insulation. The house has undergone a total renovation, including new electrical and plumbing installations as well as underfloor heating throughout. It also has the most stunning views of the Sierra Mijas mountains, sea, Sierra Nevada (mountain with snow in the winter), green nature and overlooking the cities of Mijas and Fuengirola and is conveniently located just a 5-minute drive from Fuengirola, the beaches, Miramar shopping center, and Castillo Sohail. Situated on a double plot totaling 1885 m<sup>2</sup> (the second plot of 767m<sup>2</sup> without villa, can be bought separately or all together)), the villa spans 227 m<sup>2</sup> of construction with expansive terraces. The upper floor features a spacious living room with an open kitchen and island, leading to a large terrace with glass railings. Additionally, there's another sizable terrace with a covered area housing a barbecue, fountain, and solarium. The master bedroom and a modern bathroom are also located on this floor. A staircase ascends to a terrace above the living room, which includes a bright covered terrace and a large open terrace offering panoramic views. On the ground floor, there are 2 bedrooms and 2 bathrooms. Additionally, the property includes a 44 m<sup>2</sup> guesthouse (ask for pictures) with a separate entrance, comprising a kitchen, living/dining room, bedroom, bathroom and a small terrace. The property features 3 private garages and 2 additional parking

+34 951 123 083 | +44 (0)330 179 8687 | [info@idiliqestates.com](mailto:info@idiliqestates.com) Local 28, Edificio D, Centro de Negocios Puerta de Banús, N-340, Km 175, 29660 Nueva Andlucia

# IDILIQ

ESTATES

spaces. For more information or to schedule a viewing, please contact us today!



+34 951 123 083 | +44 (0)330 179 8687 | [info@idiliqestates.com](mailto:info@idiliqestates.com) Local 28, Edificio D, Centro de Negocios Puerta de Banús, N-340, Km 175, 29660 Nueva Andalucía

# IDILIQ

ESTATES

