



R4652305

 Nueva Andalucía

REF# R4652305 800.000 €

BEDS

4

BATHS

3

BUILT

248 m<sup>2</sup>

TERRACE

26 m<sup>2</sup>

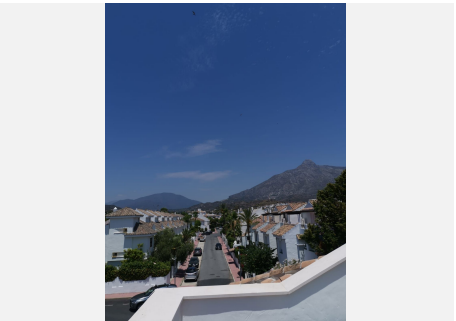
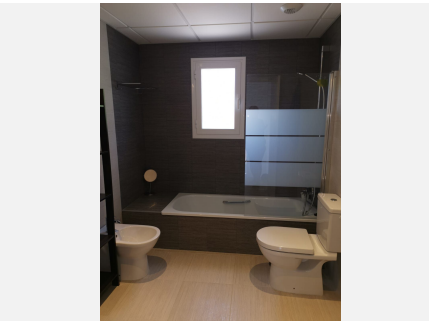
Introducing a spacious and modern townhouse ideal for large families, located in the coveted area of Nueva Andalucía, just moments from the vibrant hub of Puerto Banus. Boasting a generous construction size of 248 square meters and a plot spanning 263 square meters, this semi-detached gem offers ample space for comfortable living. Built in 2018 as part of the prestigious "Los Naranjos de Marbella" Urbanization, this home is characterized by its contemporary design and impeccable condition. Flooded with natural light streaming through expansive windows, the interior is bright and inviting, creating a welcoming ambiance for family gatherings and everyday living. With four bedrooms and three bathrooms, including a master suite with access to a terrace and a small balcony, this townhouse ensures privacy and comfort for every family member. The kitchen is equipped with top-of-the-line appliances, perfect for culinary enthusiasts, while marble floors and central air conditioning enhance the luxurious feel throughout. Safety and convenience are paramount, with features such as a reinforced door, alarm system, and walls with thermal and acoustic insulation. Outside, residents can enjoy a non-slip exterior floor, ideal for outdoor activities, as well as access to communal amenities including a pool and children's playground within the Urbanization. Moreover, the location in Nueva Andalucía offers added convenience with various amenities such as restaurants, supermarkets, yoga schools, and a kindergarten located within the vicinity, providing everything

+34 951 123 083 | +44 (0)330 179 8687 | [info@idiliqestates.com](mailto:info@idiliqestates.com) Local 28, Edificio D, Centro de Negocios Puerta de Banús, N-340, Km 175, 29660 Nueva Andalucía

# IDILIQ

ESTATES

needed for modern family living. Don't miss the opportunity to make this exquisite townhouse your new home in the sought-after area of Nueva Andalucia, offering both tranquility and proximity to the vibrant lifestyle of Puerto Banus.



# IDILIQ

ESTATES

