

IDILIQ

ESTATES



R4640023

📍 Elviria

REF# R4640023 675.000 €

BEDS

3

BATHS

3

BUILT

145 m²

TERRACE

35 m²

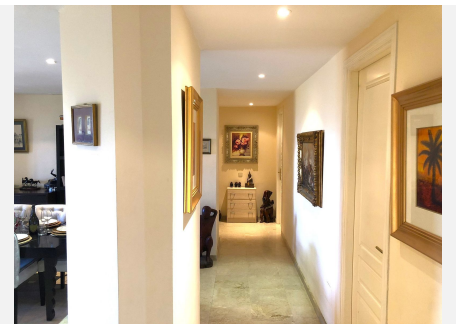
Exquisite 3-bedroom, 3-bathroom en suite apartment in the prestigious *Elviria Hills*. This first-floor gem boasts a **south-facing orientation*, ensuring a sun-drenched living experience with breathtaking views of the sea and the lush greens of the adjacent golf course. Nestled in an *award-winning urbanization*, the residence is a mere **100 meters from a Michelin-starred restaurant, a welcoming clubhouse, a serene lake, and the **9-hole Greenlife golf course. The **Mediterranean vistas* unfold from both the south and west-facing terraces, creating the perfect backdrop for sunbathing or enjoying an al fresco BBQ. For those who seek relaxation, two *communal pools* are conveniently located just *50 meters away, each surrounded by an ample selection of sun loungers. The apartment also includes a **private storage room, secure **underground parking*, and additional parking for guests. Situated within a *25-minute walk to the Elviria Commercial Centre* and just *5 minutes further to the pristine beach, this property is a must-see. Golf enthusiasts will appreciate the proximity to the **par 3 course* and the *18-hole Santa Maria course, which is less than a **5-minute drive away, with four more courses within a **10-minute radius*. Elviria, a storied and well-established community east of Marbella, is celebrated for its *superb beaches, picturesque countryside, and now, its array of **exceptional dining venues* and *top-tier amenities*. It's no wonder that this locale has become a favored destination for discerning visitors who consistently choose East Marbella

+34 951 123 083 | +44 (0)330 179 8687 | info@idiliqestates.com Local 28, Edificio D, Centro de Negocios Puerta de Banús, N-340, Km 175, 29660 Nueva Andalucía

IDILIQ

ESTATES

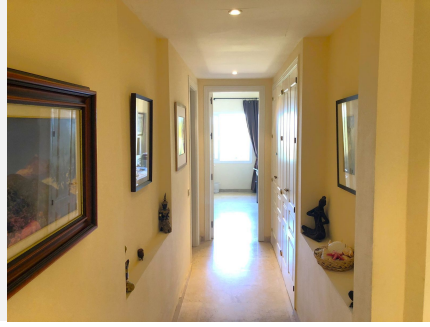
and Elviria year after year. This *Middle Floor Apartment* in Elviria, on the *Costa del Sol*, represents not just a home, but a lifestyle choice for those seeking the finest in comfort, convenience, and class. It has an occupational licence LPO 3 Bedrooms, 3 Bathrooms, Built 145 m², Terrace 35 m². Setting : Frontline Golf, Close To Golf, Close To Shops, Close To Sea, Close To Schools, Close To Forest, Urbanisation. Orientation : South, West. Pool : Communal. Climate Control : Air Conditioning, Hot A/C, Cold A/C, Central Heating, U/F/H Bathrooms. Views : Sea, Golf, Garden, Pool. Features : Covered Terrace, Lift, Fitted Wardrobes, Satellite TV, WiFi, Gym, Sauna, Tennis Court, Storage Room, Utility Room, Ensuite Bathroom, Access for people with reduced mobility, Marble Flooring, Bar, Double Glazing, Restaurant On Site, Fiber Optic, Handicap access. Furniture : Optional. Kitchen : Fully Fitted. Garden : Communal, Landscaped. Security : Entry Phone, Alarm System. Parking : Underground, Street, More Than One. Utilities : Electricity. Category : Golf, Holiday Homes, Resale.



+34 951 123 083 | +44 (0)330 179 8687 | info@idiliqestates.com | Local 28, Edificio D, Centro de Negocios Puerta de Banús, N-340, Km 175, 29660 Nueva Andalucía

IDILIQ

ESTATES



IDILIQ

ESTATES

