



R4639801

📍 Torreblanca

REF# R4639801 1.050.000 €

BEDS

4

BATHS

3.5

BUILT

196 m<sup>2</sup>

PLOT

1231 m<sup>2</sup>

TERRACE

180 m<sup>2</sup>

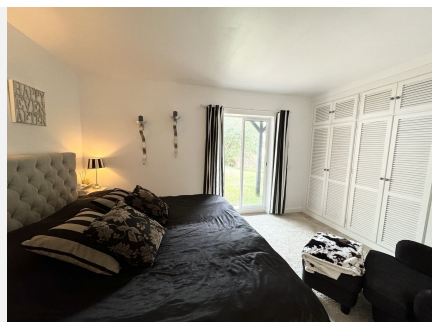
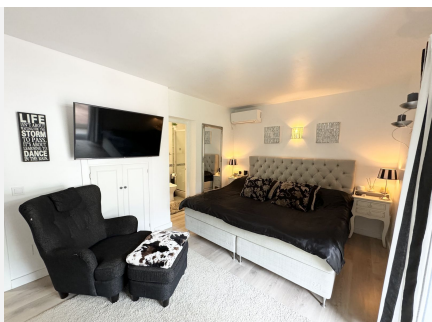
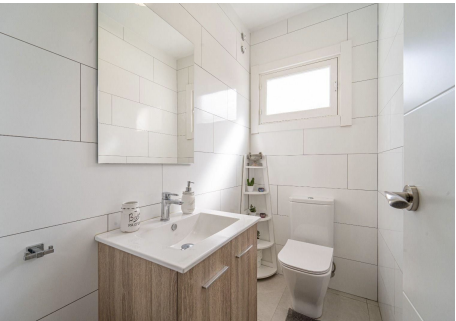
Fantastic villa in Torreblanca on a large green plot, private pool, several parking spaces and separate guest apartment. Welcome to this renovated home located in a quiet area but still close to the city and the beach. A total of 4 bedrooms, 3.5 bathrooms and a bright, spacious living/dining room with several entrances to surrounding terraces. On street level, we have easy parking options in the private garage, gate into the yard with a larger parking and also a parking space right by the house's main entrance. In addition to this entrance, there is another gate to the property and direct access to the spacious laundry room and the bright, fully equipped kitchen, as well as a separate entrance to the guest apartment with its own bathroom/kitchen. This provides fantastic opportunities to rent out the apartment, or the whole house if you wish, as both Lpo and rental license are available. Indoor and outdoor lighting, spotlights, security cameras and alarms, lighting in the pool, heating, music, fire alarms and more are high-tech and can be controlled with an app via your mobile phone. Everything to create the comfort you want and deserve. Two plots of land with a total of 1231 square meters, right on the border of a green area where nothing can be built and thus contributes to the protected transparency and tranquility. Large heated pool, palm trees and fruit trees, small ball field/play area with artificial grass and several terraces and patios. The location is south/west/east so morning sun at breakfast, sun by the pool during the day, and at noon and evening on parts of the patio.

+34 951 123 083 | +44 (0)330 179 8687 | [info@idiliqestates.com](mailto:info@idiliqestates.com) Local 28, Edificio D, Centro de Negocios Puerta de Banús, N-340, Km 175, 29660 Nueva Andlucia

# IDILIQ

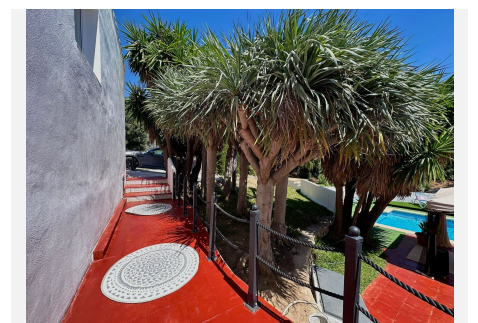
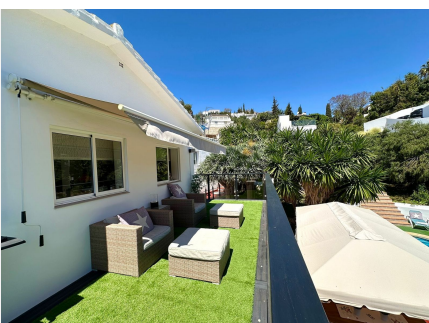
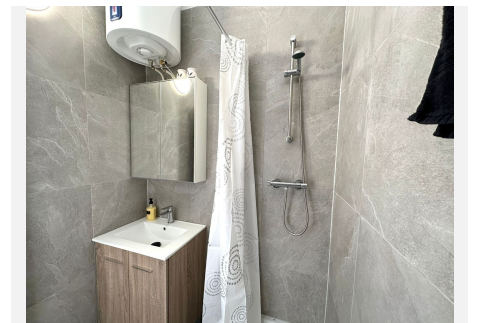
ESTATES

In addition to the lovely view of the green valley and the area, you can see the sea in the southeast. All numbers and fees is provided by the vendor.



# IDILIQ

ESTATES



# IDILIQ

ESTATES

