



PENTHOUSE DUPLEX 2 BEDROOMS 2.5 BATHROOMS IN ESTEPONA

 Estepona

REF# R4631650 378.000 €

BEDS

2

BATHS

2.5

BUILT

178 m²

TERRACE

30 m²

Welcome to this beautiful penthouse in Monte Selwo, an area celebrated for its panoramic views of the mountains and the sea. The property enjoys a favorable southwest orientation, ensuring it basks in sunlight all day long, making it a bright and warm home.

Upon entry, you are introduced to a generously sized, fully-equipped kitchen that opens up to a vast living space. This area is perfectly arranged to include a dining section, ideal for hosting dinners or enjoying quiet meals at home. Additionally, a convenient guest toilet is located on the first floor, adding to the practical layout of the apartment.

One of the standout features of this penthouse is its extensive terrace space. These terraces are not just large but are designed to enhance the joy of outdoor living in the Costa del Sol, providing ample room for relaxation, entertainment, or simply soaking in the stunning surroundings.

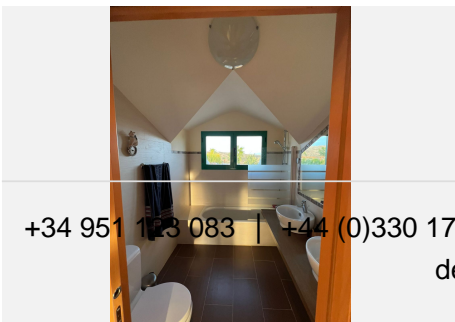
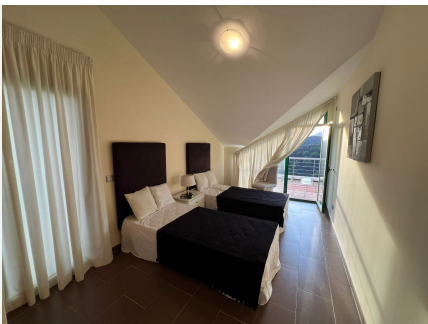
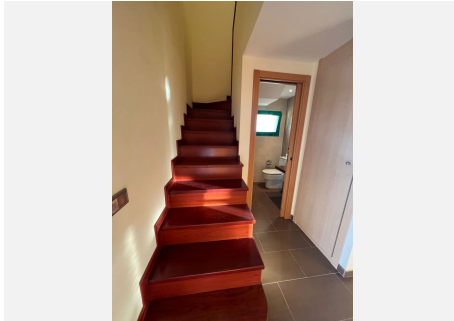
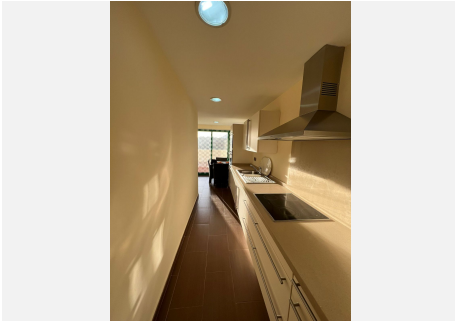
IDILIQ

ESTATES

Moving to the second floor, you will find two well-appointed bedrooms. Each bedroom has the luxury of direct access to a large terrace, offering private outdoor space to start your day with a breath of fresh air or unwind in the evenings. Complementing these bedrooms are two full bathrooms, ensuring convenience and privacy for residents and guests alike.

The community surrounding the penthouse is a reflection of meticulous care and attention to detail, boasting beautiful gardens that create a serene and inviting atmosphere. The inclusion of a swimming pool offers a refreshing escape from the warmth of the Spanish sun, all within the well-kept grounds of the complex.

This penthouse not only promises a home with breathtaking views and luxurious outdoor living spaces but also situates you in a well-maintained community that enhances the quality of life for its residents.



IDILIQ

ESTATES

