



R4625671

 Benahavís

REF# R4625671 450.000 €

BEDS

2

BATHS

2

BUILT

156 m<sup>2</sup>

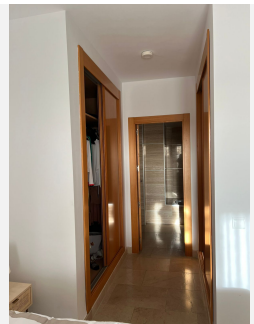
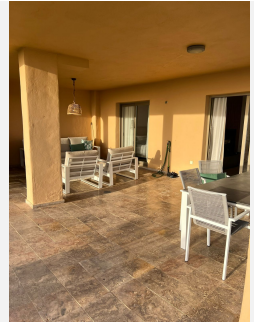
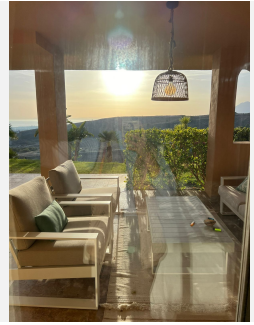
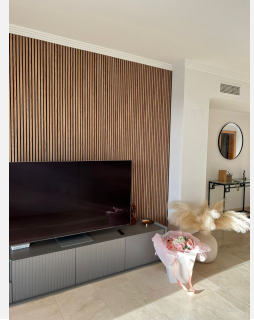
TERRACE

53 m<sup>2</sup>

Excellent ground floor located on a corner in a private complex, situated in proximity to the well-known Puerto Banús and the charming village of San Pedro de Alcántara. This high-quality and fully furnished apartment features modern facilities, double-glazed windows, electric blinds, plenty of light, and sea views. The complex offers its residents an impressive pool surrounded by lush tropical gardens, adorned with lakes and waterfalls. Additionally, it has a SPA center, jacuzzi, gym, free Wi-Fi services, and an indoor pool. Nearby, you will find a supermarket and the Atalaya golf course. The property consists of a spacious living room with access to a 53m<sup>2</sup> terrace offering views of the golf course and the sea, two large bedrooms, two bathrooms, and a fully equipped kitchen. It also includes a garage and storage room. Make this apartment your new home and enjoy all its amenities!

# IDILIQ

ESTATES



# IDILIQ

ESTATES

