



R4624462

📍 Atalaya

REF# R4624462 390.000 €

BEDS

2

BATHS

2

BUILT

114 m²

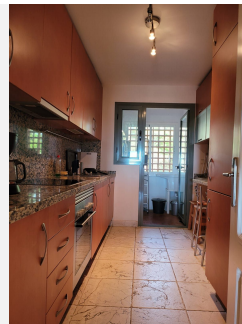
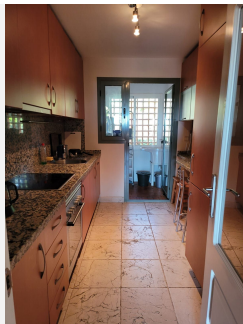
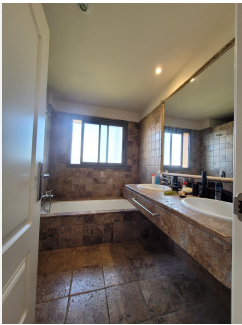
TERRACE

40 m²

Middle Floor Apartment, Atalaya, Costa del Sol. 2 Bedrooms, 2 Bathrooms, Built 114 m², Terrace 40 m². Setting : Frontline Golf, Close To Golf, Close To Shops, Close To Schools, Urbanisation. Orientation : South. Condition : Excellent. Pool : Communal, Indoor, Heated. Climate Control : Air Conditioning, U/F/H Bathrooms. Views : Sea, Mountain, Panoramic, Garden. Features : Covered Terrace, Lift, Fitted Wardrobes, Private Terrace, Sauna, Storage Room, Utility Room, Ensuite Bathroom, Marble Flooring, Double Glazing, 24 Hour Reception. Kitchen : Fully Fitted. Garden : Communal. Security : Gated Complex, Entry Phone, 24 Hour Security. Parking : Underground, Garage, More Than One. Utilities : Electricity. Category : Bargain, Investment.

IDILIQ

ESTATES



IDILIQ

ESTATES

