



R4622590

📍 Monte Halcones

REF# R4622590 980.000 €

BEDS

3

BATHS

3

BUILT

200 m²

TERRACE

53 m²

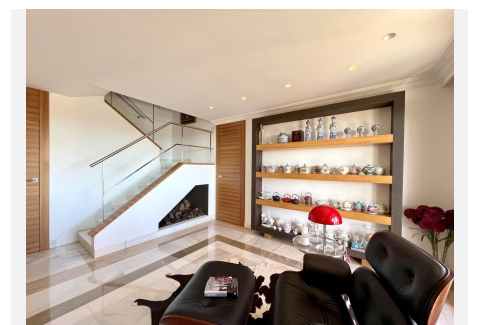
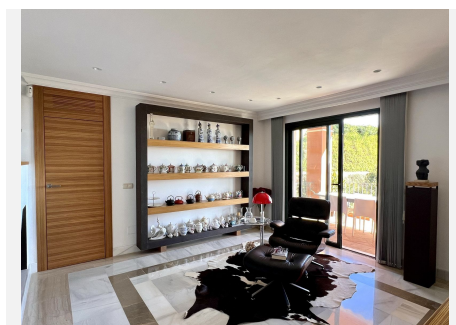
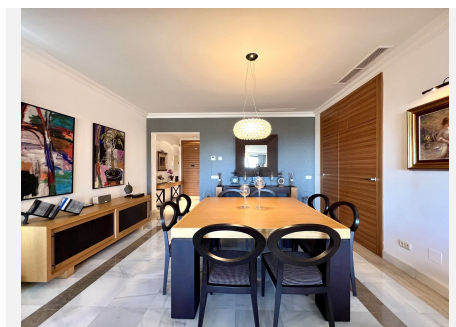
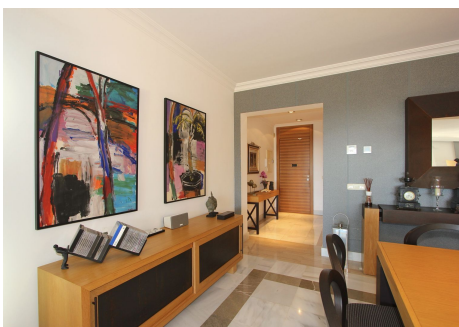
Spacious 3-bedroom penthouse with panoramic sea views in Monte Halcones, Benahavis Residential complex with only 36 neighbours, very private and quiet. The Monte Halcones urbanization is located on the rise from San Pedro de Alcántara towards Ronda, surrounded by green areas, golf courses and luxury developments. It also has direct access to La Quinta to reach Nueva Andalucía. In the urbanization there is a shopping centre with everything necessary for daily life. The complex has a community pool, security, and garages are in the lower level of each block. The duplex penthouse faces southeast, with open and panoramic views to the sea and golf courses. The elevator will take you from its 2 parking spaces (located right in front) to the entrance of the property. Upon entering through the door we see a large hall, to the left we have a room that has currently been converted into an office but it could be a bedroom since it has its closets. After the hall, we are surprised by the spacious living room with sea views, divided into 3 areas: the dining room, the living room with fireplace and a part with a bookcase and an armchair to lie down and read. Also, in the living room there is a small storage room, a bathroom and a woodshed under the stairs. The kitchen is very spacious with many storage units and an island in the middle to be able to prepare all the meals you want. In front of the living room, we have a large terrace divided into two areas, with a large part of it covered and another part open. On the side of the living room, we have a large bedroom with its en-

+34 951 123 083 | +44 (0)330 179 8687 | info@idiliqestates.com Local 28, Edificio D, Centro de Negocios Puerta de Banús, N-340, Km 175, 29660 Nueva Andalucía

IDILIQ

ESTATES

suite bathroom and private terrace. On the upper part we have the master bedroom with its en-suite bathroom, dressing room for him and her, and a large terrace with impressive sea views where you can enjoy the jacuzzi with a good glass of wine. The property has 2 parking spaces (29m²) and a storage room (11m²). Daikin air conditioning, underfloor heating in bathrooms, interior carpentry made of exotic African Zebrano wood, fireplace, jacuzzi, double-glazed windows, alarm, awnings on the terrace, kitchen with high-performance appliances, kitchen with island, community pool.



IDILIQ

ESTATES



IDILIQ

ESTATES



IDILIQ

ESTATES

