

IDILIQ

ESTATES



R4621810

 Costabella

REF# R4621810 2.800.000 €

BEDS

4

BATHS

4

BUILT

329 m²

PLOT

2780 m²

TERRACE

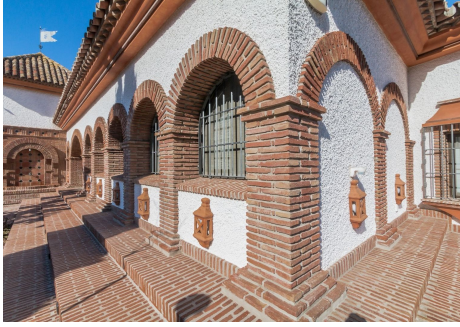
178 m²

This Andalusian-style villa, designed by a renowned German architect in 2001, seamlessly blends traditional charm with modern comfort. Nestled just a quick two-minute walk from the beach, the villa features a delightful garden with fruit trees and ancient olive groves. The spacious terrace, divided into a barbecue area and a relaxation zone, provides the perfect setting for outdoor enjoyment. Inside, a welcoming hall with a fireplace leads to a stylish living-dining space, offering direct access to the terrace and a cozy retreat. Ascend to the two-story tower housing two bedrooms and a well-appointed bathroom. The master bedroom, with an en-suite bathroom, and a tastefully designed kitchen maintain the home's overall aesthetic. Additional bedrooms, accessible through private garden entrances, ensure privacy for every family member, each equipped with its own bathroom. The villa is equipped with central heating and solar panels, eliminating the need for air conditioning due to the double-cavity walls that provide natural climate control. Beyond the main residence, a 135 m² building serves as a secure garage for four vehicles, but its versatility allows for various uses, from a recreation space to a sauna, tailored to the new owner's preferences. Discover a comfortable and stylish lifestyle in this charming Andalusian villa. The owner is highly flexible regarding the sale price and terms, accommodating various negotiations to meet the preferences and needs of potential buyers.

+34 951 123 083 | +44 (0)330 179 8687 | info@idiliqestates.com Local 28, Edificio D, Centro de Negocios Puerta de Banús, N-340, Km 175, 29660 Nueva Andlucia

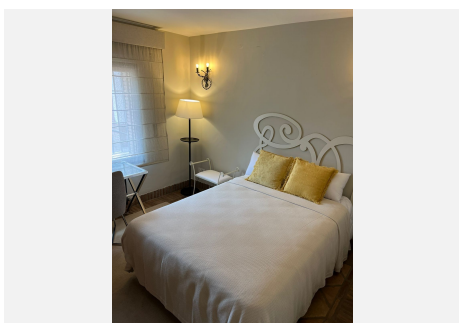
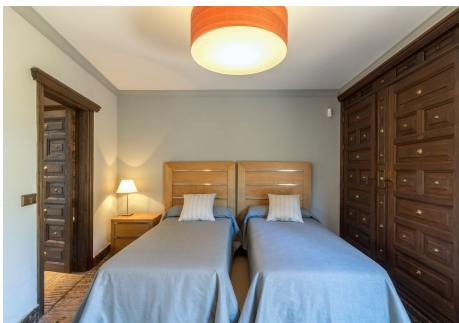
IDILIQ

ESTATES



IDILIQ

ESTATES



IDILIQ

ESTATES

