



R4620394

 Benalmadena Costa

REF# R4620394 890.000 €

BEDS

4

BATHS

2

BUILT

206 m²

PLOT

636 m²

TERRACE

20 m²

DETACHED HOUSE WITH A PLOT OF 636 M2 IN THE HEART OF BENALMÁDENA COSTA IN THE PLAZA SOLYMAR AREA LESS THAN 500 METERS FROM PUERTO MARINA. It is distributed on two floors: The main floor is distributed with a large living room with a large window with direct access to the pool area. Fully furnished and equipped independent kitchen. 1 exterior double bedroom. 1 full bathroom with shower. Large entrance hall with storage areas. On the second floor we find 3 large double bedrooms, the master bedroom with an en-suite bathroom and two of them with a terrace. 2 full bathrooms. The land has large gardens and a swimming pool and a storage room. The house also has an interior garage, low consumption electric heating and fireplace in the living room.

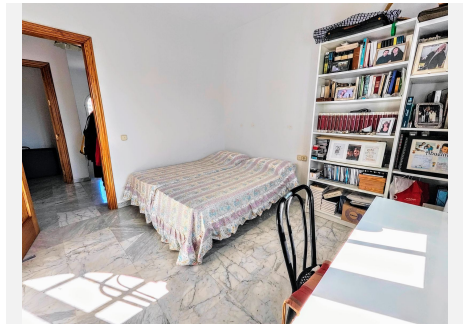
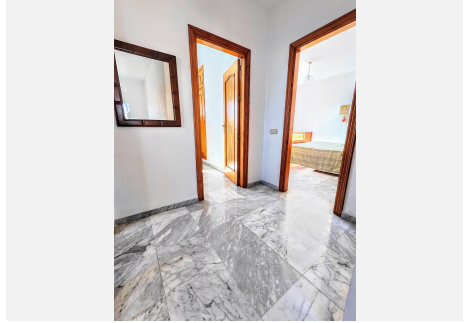
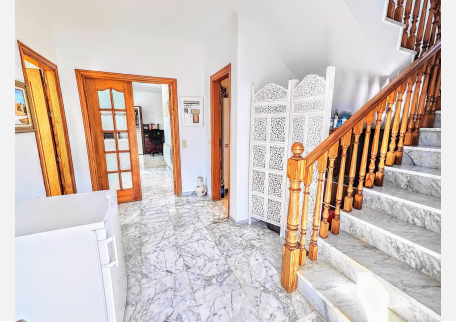
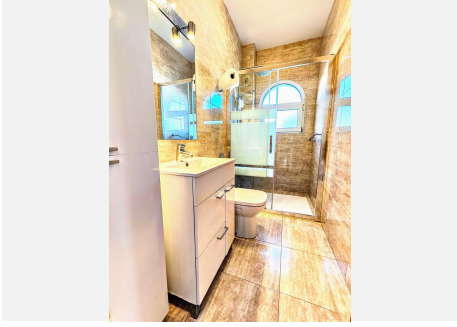
IDILIQ

ESTATES



IDILIQ

ESTATES



IDILIQ

ESTATES

