

IDILIQ

ESTATES



R4600957

 Bahía de Marbella

REF# R4600957 3.600.000 €

BEDS

5

BATHS

4

BUILT

603 m²

PLOT

1711 m²

TERRACE

200 m²

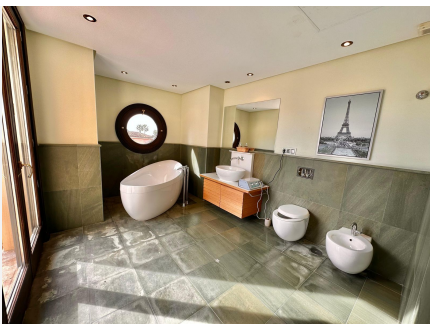
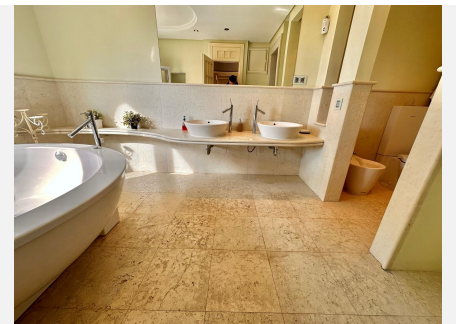
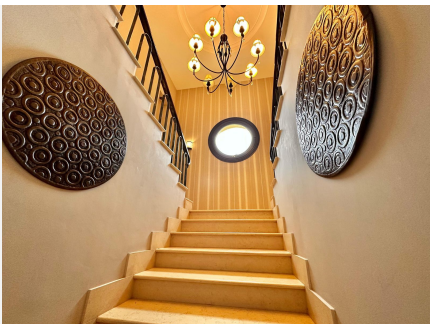
OPPORTUNITY!! Unique and exclusive villa in Bahía Marbella, 200m from the beach. Unbeatable location in a closed area, next to the best beaches in the area. It has an Andalusian style, timeless and elegant, and is distributed over three floors, including the basement, restoration is required in some areas and the basement, hence its price well below the market. Just 3 km from the center of Marbella, with 24-hour security, in one of the most charming places on the Coast. The plot that houses this magnificent property has a surface area of 1,711 m². For its part, the house has 602.9 m² built. The villa was built in 2004 and has 3 double bedrooms with their own bathroom on the upper floor, 2 bedrooms on the ground floor along with large living rooms and kitchen; In the basement there is a large garage with several rooms for storage, gym, leisure and pool service. Outside we can find a magnificent swimming pool and an extensive garden area for recreation and enjoyment that includes a large space for barbecues. Its condition is quite good and it can be visited at any time, we have the keys in the office! Ask for the price. Bahía de Marbella, Costa del Sol. 5 Bedrooms, 4 Bathrooms, Built 603 m², Terrace 200 m², Garden/Plot 1711 m². Setting : Close To Sea. Orientation : South East, South, South West. Condition : Renovation Required, Restoration Required. Pool : Private. Climate Control : Air Conditioning, Pre Installed A/C, Hot A/C, Cold A/C. Views : Sea, Mountain, Garden. Features : Covered Terrace, Lift, Fitted Wardrobes, Near Transport, Private Terrace, Satellite TV,

+34 951 123 083 | +44 (0)330 179 8687 | info@idiliqestates.com Local 28, Edificio D, Centro de Negocios Puerta de Banús, N-340, Km 175, 29660 Nueva Andlucia

IDILIQ

ESTATES

WiFi, Gym, Sauna, Games Room, Storage Room, Ensuite Bathroom, Wood Flooring, Access for people with reduced mobility, Jacuzzi. Furniture : Optional. Kitchen : Fully Fitted. Garden : Private, Landscaped. Security : Gated Complex, 24 Hour Security. Parking : More Than One, Private. Utilities : Drinkable Water, Telephone, Gas. Category : Beachfront, Holiday Homes, Investment, Luxury.



IDILIQ

ESTATES

