



R4597723

📍 Casares Playa

REF# R4597723 240.000 €

BEDS

3

BATHS

2

BUILT

147 m²

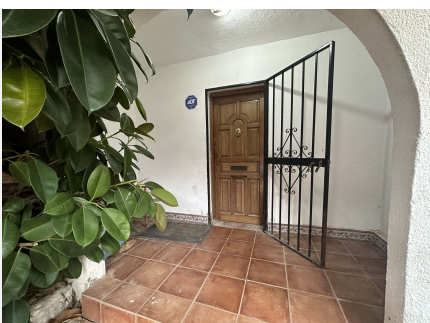
TERRACE

50 m²

TOWNHOUSE SINGLE-FAMILY HOUSE. It consists of a ground floor and first floor, with porches and a private garden. It occupies an area of 103'13 square meters on the total plot, of which 49'95 square meters correspond to the ground floor of the home itself and the rest to porches and private garden, on the upper floor it has an area of 59'41 square meter. Its total constructed area is 147.12 square meters. It is internally distributed in: hall, kitchen, living-dining room and two porches on the ground floor and hallway, three bedrooms and two bathrooms on the upper floor, both floors being interconnected by an internal staircase.

IDILIQ

ESTATES



IDILIQ

ESTATES

