



R4563688

📍 Nueva Andalucía

REF# R4563688 5.200.000 €

BEDS

7

BATHS

6

BUILT

923 m<sup>2</sup>

PLOT

1770 m<sup>2</sup>

TERRACE

785 m<sup>2</sup>

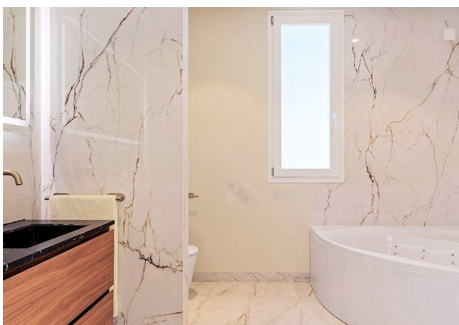
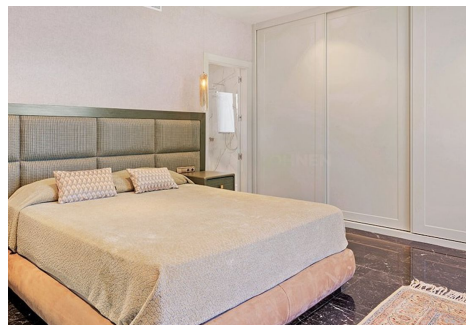
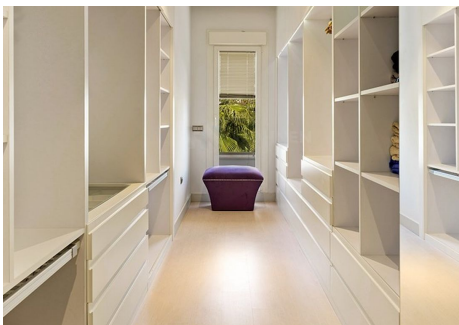
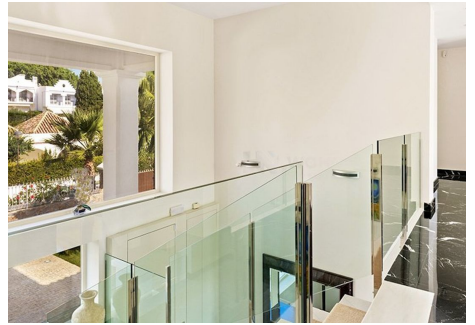
This newly renovated, seven-bedroom villa nestled on a sprawling 1770m<sup>2</sup> plot between Aloha and Las Brisas presents a harmonious blend of sophistication and comfort. Boasting an elevator servicing all three levels, this modern sanctuary unveils an abundance of space and opulence. Step into the grand entrance suffused with natural light, guiding you to an expansive open-plan living area adorned with a sleek fireplace. The heart of this home lies in the newly fitted kitchen, complete with a cooking island doubling as a breakfast bar and seamlessly merging with a dining space for eight. Large sliding doors lead to a sprawling covered terrace overlooking the 15-meter swimming pool, complete with a solar-powered electric cover ensuring year-round comfort. Indulge in outdoor entertaining at the fully equipped covered BBQ area, effortlessly transitioning to an extra living space with foldable glass walls and electric awnings. This haven also boasts two ensuite bedrooms on the ground floor, while the first floor hosts three additional ensuite bedrooms, including the master suite with a walk-in wardrobe and a charming garden-facing terrace. The lower floor beckons with entertainment options—a cinematic experience awaits in the theater room with an 86-inch TV and surround sound, while the garden-view gym inspires fitness. Two more bedrooms, a garage for three cars, and ample parking space complete this exceptional property—a masterpiece awaiting its discerning owner's touch.

+34 951 123 083 | +44 (0)330 179 8687 | [info@idiliqestates.com](mailto:info@idiliqestates.com) Local 28, Edificio D, Centro de Negocios Puerta de Banús, N-340, Km 175, 29660 Nueva Andlaucia



# IDILIQ

ESTATES



# IDILIQ

ESTATES

