

IDILIQ

ESTATES



R4563055

 Mijas

REF# R4563055 595.000 €

BEDS

3

BATHS

3

BUILT

227 m²

PLOT

540 m²

TERRACE

80 m²

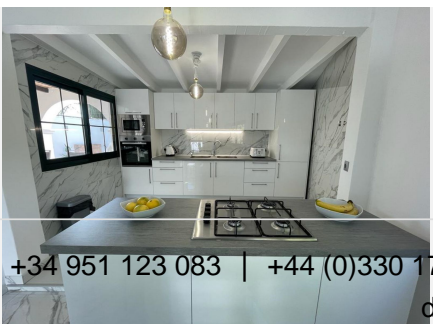
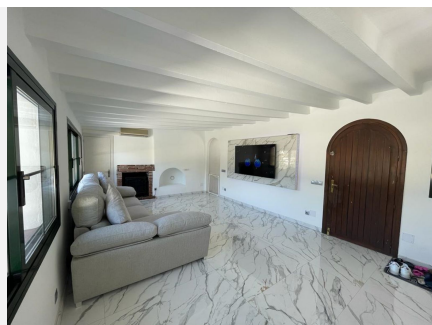
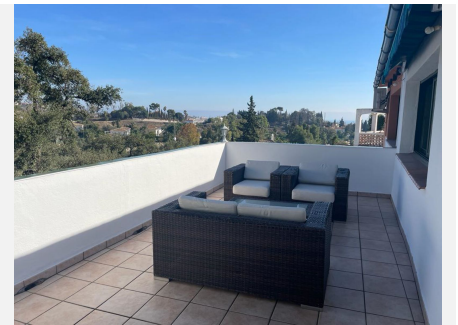
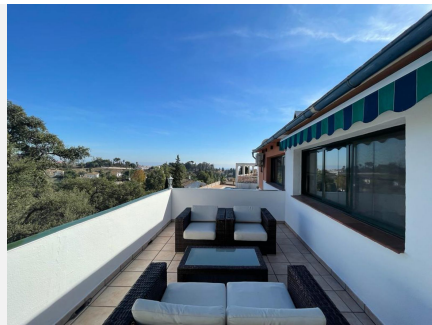
BRAND NEW EXCLUSIVE LISTING. 3 BEDROOM DETACHED VILLA LOCATED 5 MINUTES DRIVE FROM MIJAS PUEBLO & FUENGIROLA. This property has just been renovated to a very high standard. It has a new non infraction certificate so the property is mortgage able and perfect for holiday rentals. Upgrades include the following: Completely re-tiled throughout. Re-plastered throughout. Completely Re-painted Inside & outside of the villa. New light switches & sockets. Ambiance mood lighting. Brand new bathrooms including showers, taps, toilets, Jacuzzi bath, cabinets, & water heaters. Bluetooth music speakers system in all bathrooms. Hot/cold air circulation to prevent damp in all rooms. En-suite Master bedroom walk-in wardrobe. Brand New High Gloss finish white kitchen. Brand New kitchen equipment: oven, microwave built in fridge freezer, water purifier & gas hob. Independent studio apartment with separate entrance, optional kitchen can be added at extra cost. Private parking. Rear Garden area with sea & mountain view's. Private swimming pool. The Property Is Ideally located to the following & within the driving times mentioned: Amazing access to both the A7/AP7, 8 Minutes to the beaches of Fuengirola, 5 Minutes to Mijas Pueblo. 20 Minutes to Marbella. 20 Minutes to Malaga Airport. Close to all the amenities you could wish for, Aldi, Lidl, Tesco's, shops, restaurants & bars, medical centers, public transport. This villa benefits from having Sea & Mountain Views. All the furniture can be included In the full asking price: Brand

+34 951 123 083 | +44 (0)330 179 8687 | info@idiliqestates.com Local 28, Edificio D, Centro de Negocios Puerta de Banús, N-340, Km 175, 29660 Nueva Andlucia

IDILIQ

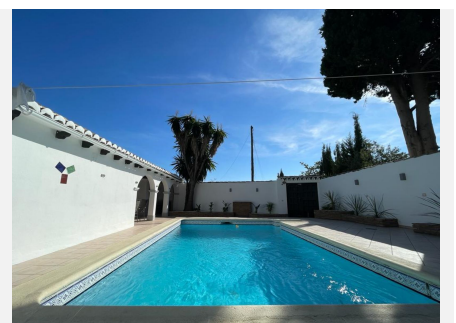
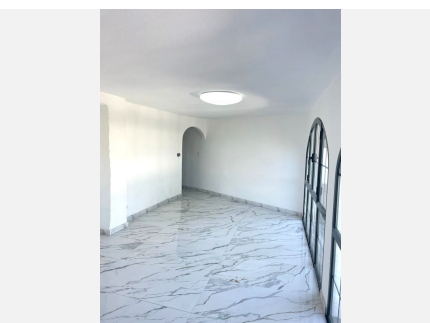
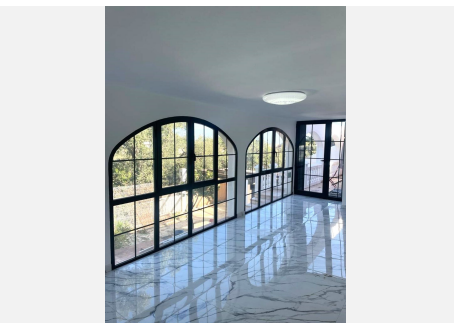
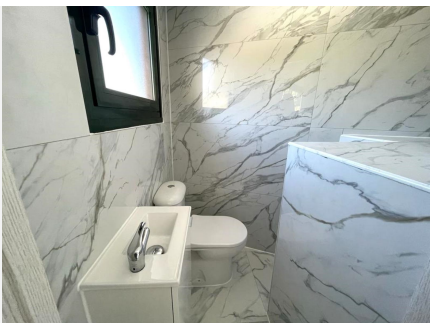
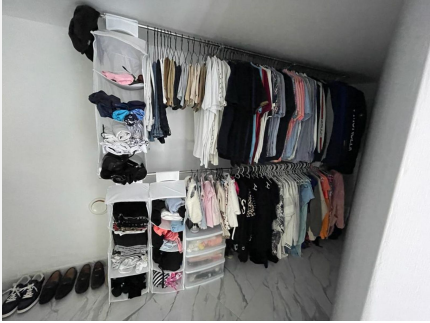
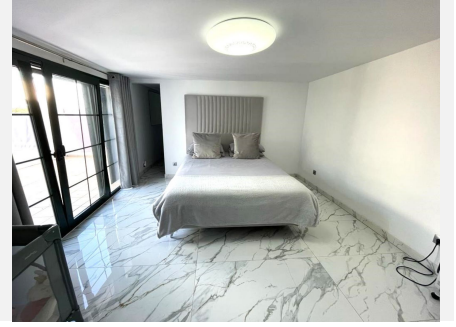
ESTATES

new beds, Curtains, Large family sofa, 65" & 55" & 32" smart tvs, New glass table & chairs, patio furniture.



IDILIQ

ESTATES



IDILIQ

ESTATES

