

IDILIQ

ESTATES



R4457845

 Nueva Andalucía

REF# R4457845 7.195.000 €

BEDS

5

BATHS

5

BUILT

476 m²

PLOT

1904 m²

TERRACE

300 m²

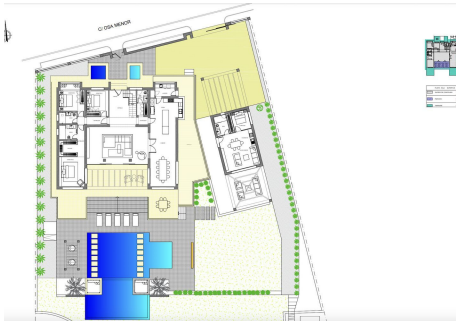
Welcome to this beautiful Marbella Golf Valley home in La Cerquilla, Nueva Andalucia designed to optimise the wonderful space within its walls, and offers the best opportunity to live within a home filled with warmth and sunshine. Attention to detail is paramount in this luxury villa, with every possible comfort included. A delightful solution for anyone looking to live close to Marbella but seeking exclusivity and privacy. An exquisite villa showcasing symmetrical modern architecture, refined interiors and a prime location in the coveted area of La Cerquilla in Nueva Andalucia. While embracing a contemporary design, this property pays homage to the traditional Andalusian-style villas of Southern Spain with its white exteriors and this Golf Valley luxury home maximises its surroundings, providing an inviting space to revel in the outdoors and 320 days of sunshine. The meticulously maintained garden, enveloped by lush trees, encompasses the terrace area of the property. The ample terraces cater to alfresco dining and relaxation, ideal for those who enjoy hosting and a lifestyle under the Mediterranean skies. Additionally, there is a stunning guest apartment on the garden level with its own terrace, doubling as a perfect setting for delightful outdoor dinners and barbecues, as this area also offers a covered outdoor kitchenette. Spanning multiple levels, the terrace's lower level showcases a captivating infinity pool, accompanied by two cosy lounge beds that overlook the adjacent golf course. A submerged seating area connected to the pool further enhances the

+34 951 123 083 | +44 (0)330 179 8687 | info@idiliqestates.com Local 28, Edificio D, Centro de Negocios Puerta de Banús, N-340, Km 175, 29660 Nueva Andalucia

IDILIQ

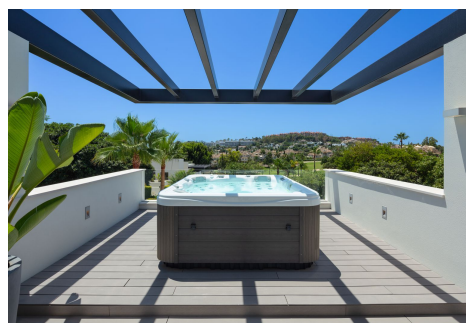
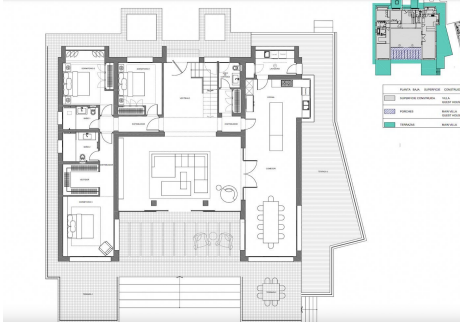
ESTATES

space. Within the property, sophistication and modern elegance enhance the interiors. A neutral colour palette adorns the space, subtly complemented by carefully selected decorative accents that infuse hints of colour. The ground floor seamlessly merges indoor and outdoor areas through floor-to-ceiling glass sliding doors. A striking wine fridge display is conveniently situated adjacent to the dining room. The modern yet functional kitchen is fully equipped, providing ample storage and counter space for culinary enthusiasts. The kitchen has been decorated with stunning wooden cabinets and soft grey marble counter tops. The kitchen and dining area are connected thanks to the open-plan layout. The top floor is dedicated to the majority of the property's bedrooms. The master bedroom steals the show, offering breathtaking views across the golf course, a large en-suite bathroom and walk-in closet. It connects to a delightful outdoor terrace complete with a jacuzzi and various seating areas, perfect for watching mesmerising sunsets. This property also comes equipped with a home gym, situated on the top level and has indoor and outdoor sections. With its contemporary architecture, refined interiors, expansive plot and coveted location.



IDILIQ

ESTATES



IDILIQ

ESTATES

