

IDILIQ

ESTATES



R4455535

📍 Benahavís

REF# R4455535 3.650.000 €

BEDS

5

BATHS

7

BUILT

528 m²

PLOT

1556 m²

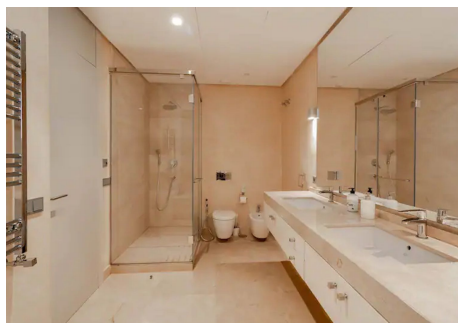
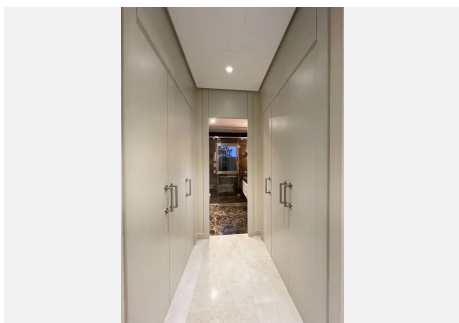
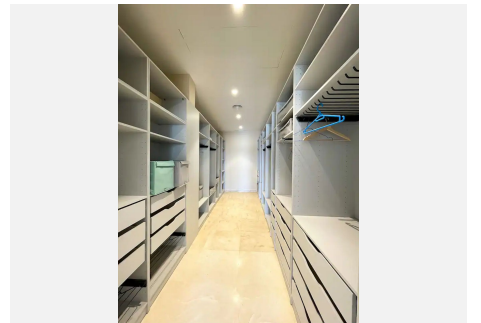
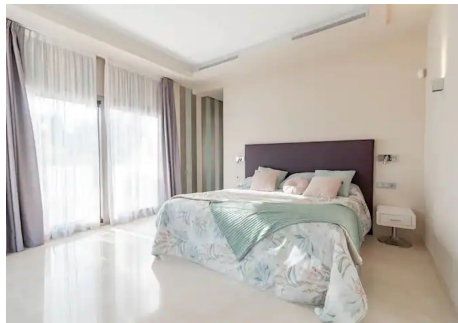
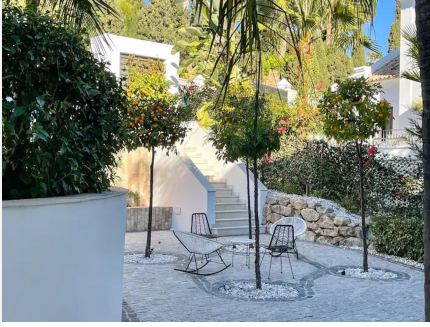
TERRACE

200 m²

This magnificent villa is an open plan one, and the ground floor flows into the terrace and the garden with lovely sea views and a vast infinity pool, leading to a chill-out area with a fireplace. The villa has ensuite bedrooms on each floor, which gives you 100% privacy. Urbanization has 24hr security, and the villa has the latest technology to add safety and comfort. The villa has solar panels on the roof and comes furnished and ready to move in. The house consists of three floors communicated through the corresponding interior staircase and an elevator. The semi-basement floor includes a bright, spacious living room with floor-to-ceiling windows facing the garden and a 60m² swimming pool with a chill-out area; spa-sauna, facility room, boiler room toilet, two ensuite bedrooms, and a porch. The ground floor has an entrance hall, open space kitchen, a living room with a porch, a bedroom with an ensuite bedroom and a dressing room, a terrace, and a pergola, which is also accessed from the kitchen. There is also direct access to/from a built-in garage for two cars. The Semi-upper floor has a large master bedroom with a spacious dressing room, a private bathroom, and a private 44 m² terrace. The upper floor has a bright bedroom with an ensuite bathroom and a terrace.

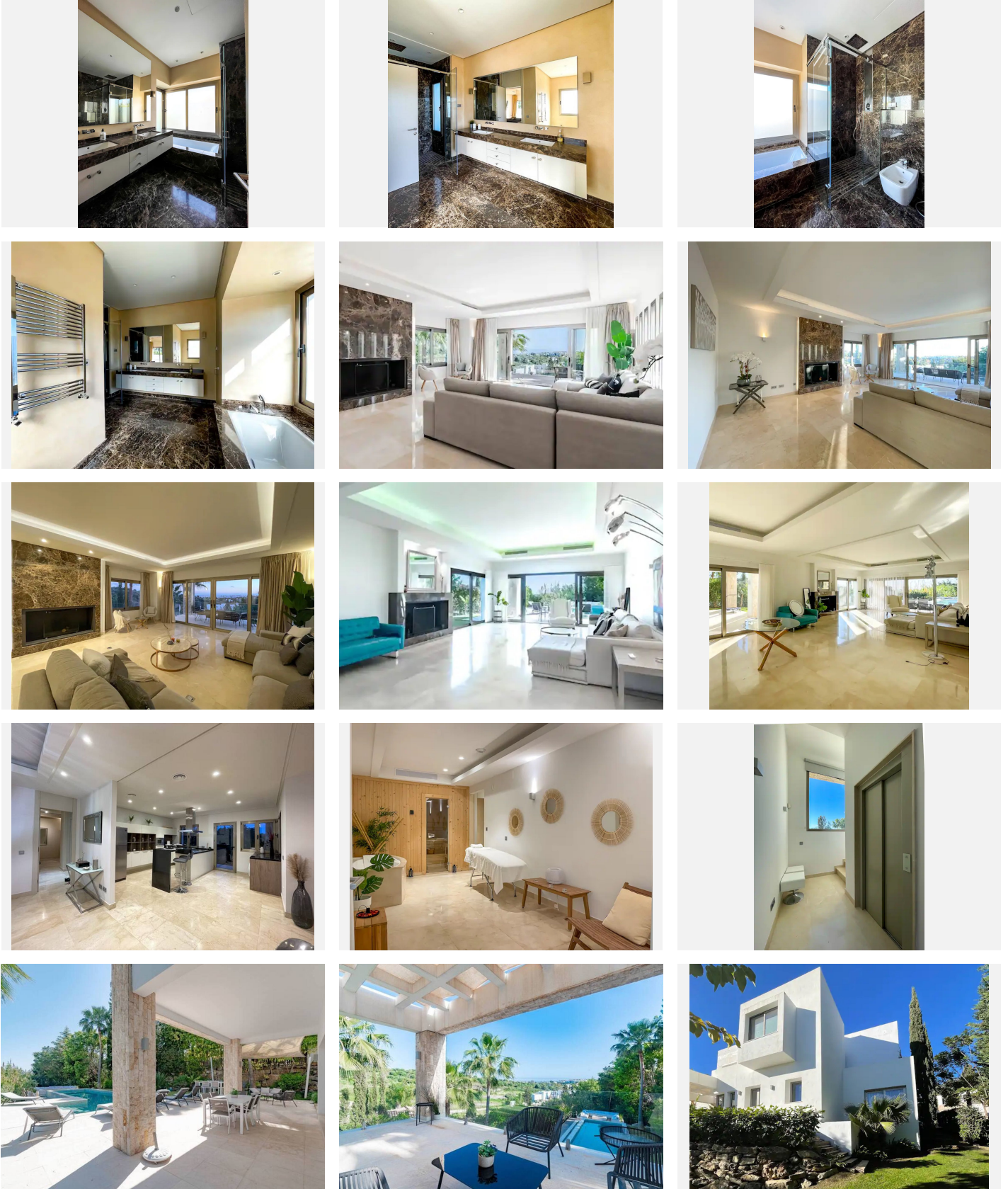
IDILIQ

ESTATES



IDILIQ

ESTATES



IDILIQ

ESTATES

