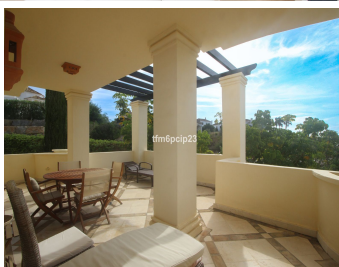


IDILIQ

ESTATES



R4438768

📍 Casares Playa

REF# R4438768 349.000 €

BEDS

2

BATHS

2.5

BUILT

122 m²

TERRACE

30 m²

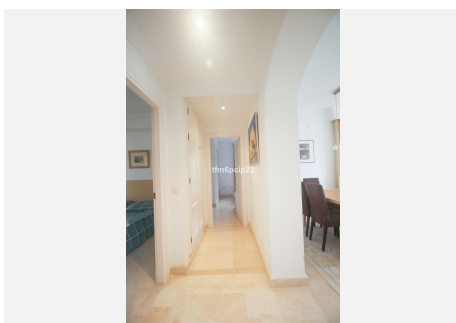
MAJESTIC GARDENS CASARES COSTA. Experience the pinnacle of luxury living with this exceptional 2-bedroom, 2.5-bathroom apartment. Situated in the coveted Casares area, it offers a lifestyle of comfort, convenience, and elegance. Perfectly positioned near the Casares beach, as well as three outstanding golf courses, including the prestigious Solheim golf course at FINCA CORTESIN, this property is a golfer's dream and a beach lover's paradise. Step inside, and you'll immediately appreciate the quality and attention to detail. Cream marble floors exude opulence, and double-glazed PVC windows and doors ensure a tranquil ambiance. Fitted wardrobes provide ample storage space, and the fully fitted open kitchen is a culinary enthusiast's delight. Pre-installation of air conditioning adds to your year-round comfort, but the highlight of this property is its sun-drenched south-facing aspect. Enjoy afternoon and evening sunshine on the large terrace as you bask in the beautiful garden views. Your convenience is further assured with an included underground parking space and a generously-sized storage room. This luxury apartment embodies the essence of modern living, combining quality, location, and style. Don't miss the opportunity to make it your own. Your convenience is further assured with an included underground parking space and a generously-sized storage room. This luxury apartment embodies the essence of modern living, combining quality, location, and style. Don't miss the opportunity to make it your own. Middle Floor Apartment, Casares

+34 951 123 083 | +44 (0)330 179 8687 | info@idiliqestates.com Local 28, Edificio D, Centro de Negocios Puerta de Banús, N-340, Km 175, 29660 Nueva Andlucia

IDILIQ

ESTATES

Playa, Costa del Sol. 2 Bedrooms, 2.5 Bathrooms, Built 122 m², Terrace 30 m². Setting : Close To Golf, Close To Sea, Urbanisation. Orientation : South. Condition : Excellent. Pool : Communal, Children`s Pool. Climate Control : Pre Installed A/C. Views : Panoramic, Garden. Features : Lift, Fitted Wardrobes, Near Transport, Private Terrace, Storage Room, Ensuite Bathroom, Marble Flooring, Double Glazing, Fiber Optic. Kitchen : Fully Fitted. Garden : Communal. Security : Gated Complex, Entry Phone. Parking : Underground, Private. Utilities : Electricity, Drinkable Water. Category : Investment, Luxury, Resale, Contemporary.



IDILIQ

ESTATES

