

R4431397

 Benalmadena Costa

REF# R4431397 998.000 €

BEDS

3

BATHS

3

BUILT

157 m²

TERRACE

45 m²

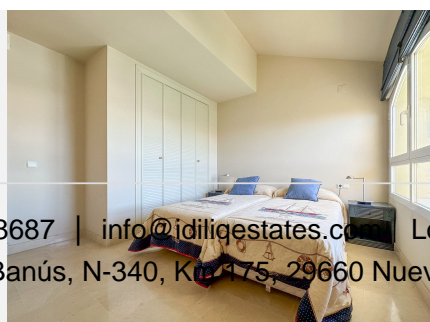
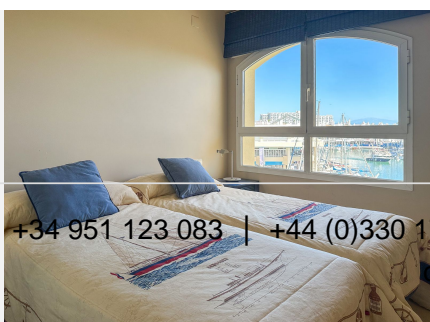
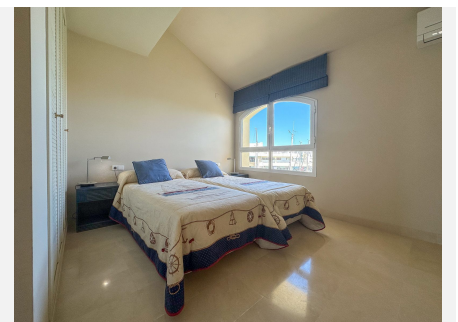
We present to you this spectacular duplex penthouse located in Dos Mares, a truly privileged area of Benalmadena harbour. This exclusive property offers breathtaking views of the sea, beach and the Port of Benalmadena. Furthermore, it's location provides quick and convenient access to the beach, as well as to a wide variety of restaurants, shopping centers, and entertainment options. On the main floor, you'll find an elegant entrance hall, a separate fully equipped kitchen looking into the spacious living-dining room that opens onto a large terrace with spectacular open views of the sea and beach. Imagine enjoying your dinner with the sea breeze as your backdrop and open seaviews all the way to Africa. On the same floor you find 2 double bedrooms. The first bedroom comes with an en-suite bathroom and its own sunny terrace with beautiful views over the harbour. The second bedroom has a separate high-quality bathroom in the hallway. Each bedroom comes with built-in wardrobes. The upper floor of this duplex penthouse has a spacious master bedroom with en-suite bathroom and another covered terrace with panoramic views over the port and the sea. Additionally, the building has an elevator that takes you direct to this the 4th floor. From this floor you have as well your own private access to the communal rooftop pool. This pool is heated and can be used 365 days a year, 24 hours a day. To complete this exceptional offer, the property comes with a 17m² storage room and a 22m² parking space in the communal underground garage, which has security

+34 951 123 083 | +44 (0)330 179 8687 | info@idiliqestates.com Local 28, Edificio D, Centro de Negocios Puerta de Banús, N-340, Km 175, 29660 Nueva Andlucia

IDILIQ

ESTATES

cameras overlooking your vehicle. This penthouse is a unique opportunity to enjoy the ultimate quality lifestyle with all imaginable comforts in an unbeatable location.



+34 951 123 083 | +44 (0)330 179 8687 | info@idiliqestates.com | Local 28, Edificio D, Centro de Negocios Puerta de Banús, N-340, Km 4,75, 29660 Nueva Andalucía

IDILIQ

ESTATES

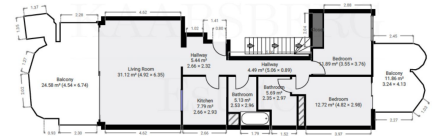


IDILIQ

ESTATES



KOT TO SCALE
ground floor



KOT TO SCALE
First floor

