



R4416052

 Cortijo Blanco

REF# R4416052 2.600.000 €

BEDS

5

BATHS

5

BUILT

309 m²

PLOT

1963 m²

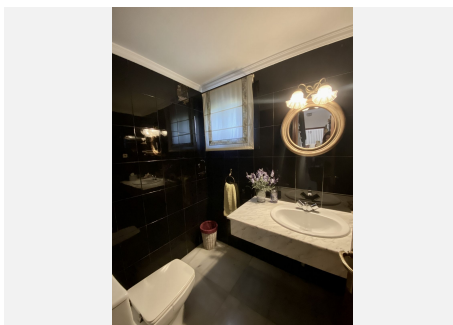
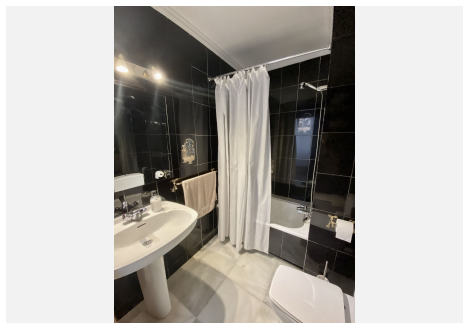
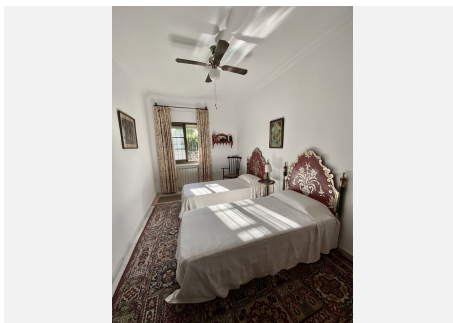
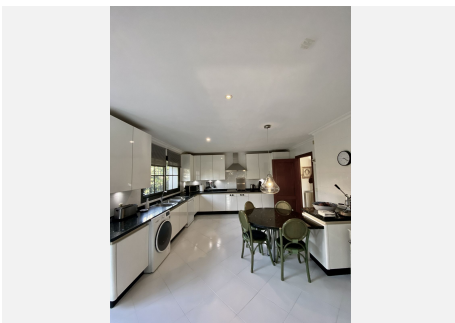
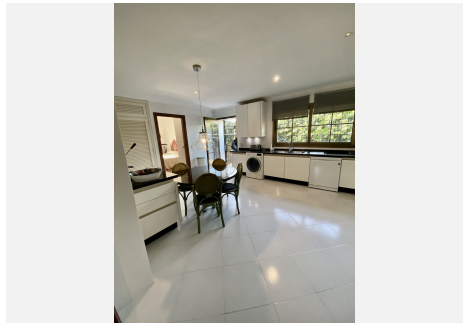
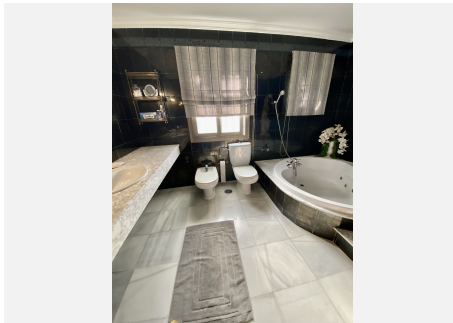
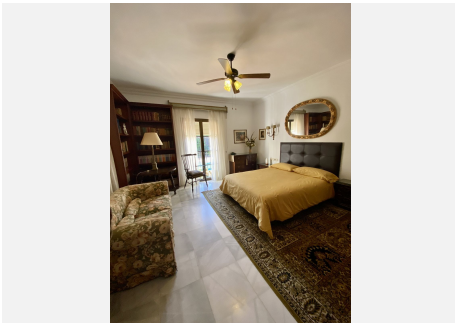
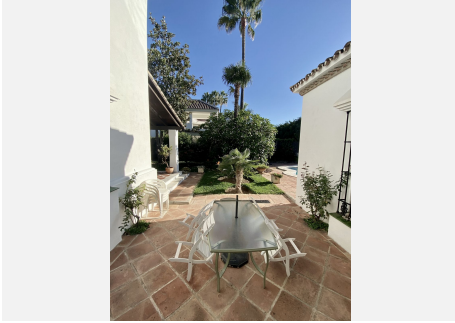
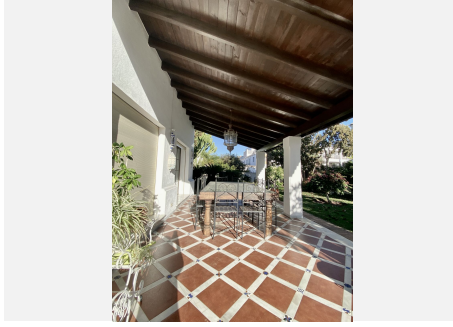
TERRACE

29 m²

Villa on a large plot located between San Pedro de Alcantara and Puerto Banus. Plot of 2000m² with a large mature garden and a swimming pool with BBQ area. The plot is located between two streets and only 500 metres from the beach. Walking distance to San Pedro de Alcantara and Puerto Banus. An unbeatable location, in an area of great potential. On the plot there is currently built a very well maintained Andalusian style house. Entrance hall with typical Andalusian tiles, large living room with double height ceiling with marble fireplace, a second family room, 5 bedrooms, 4 bathrooms and 1 guest toilet. Low density area with easy access to the beach, motorway and Puerto Banus. Close to shops, restaurants and international schools. This same plot has the possibility to be divided into two independent plots to build two houses.

IDILIQ

ESTATES



IDILIQ

ESTATES

