



R4414045

📍 Alhaurín de la Torre

REF# R4414045 880.000 €

BEDS

6

BATHS

4

BUILT

421 m²

PLOT

1021 m²

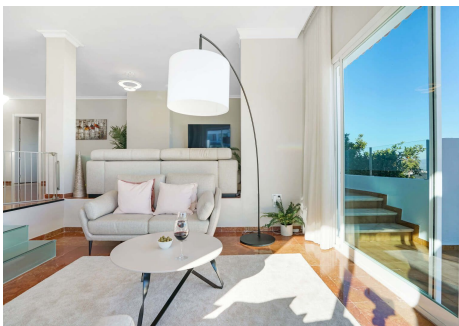
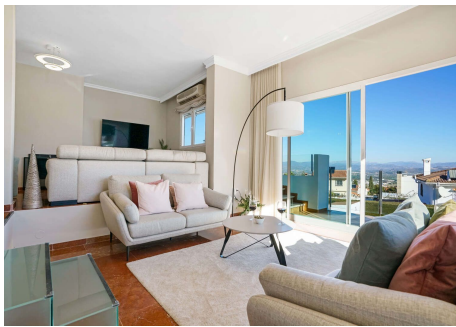
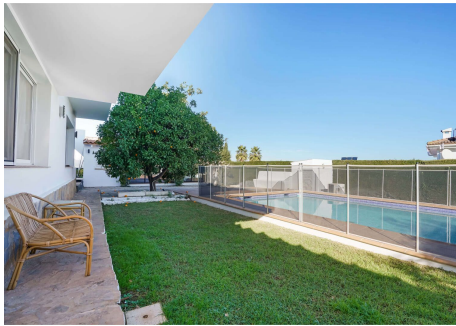
Exclusive Modern Villa in Alhaurin de La Torre, Near Malaga Discover this modern home with a unique nook in the living room. Enjoy comfort with double glazing, fans, and a wood stove. The kitchen is ultra-modern and is equipped with the latest built-in appliances. The main bedroom has a spacious walk-in closet and ensuite bathroom. In total, the main house offers 3 bedrooms. Extra: 2 independent guest apartments with private access - ideal for renting out. Possibility of expansion with 2 additional bedrooms. Step into this masterpiece of modern architecture and design in the heart of Alhaurin de La Torre. This luxurious 6-bedroom, 4-bathroom villa, covering an expansive 412 sqm, seamlessly integrates comfort, style, and state-of-the-art features. Key Features: - Bedrooms: 6 spacious bedrooms - Bathrooms: 4 contemporary bathrooms, fitted with high-quality fixtures. - Reformed Design: Totally reformed to modern standards, featuring minimalist aesthetics with a touch of warmth to create a harmonious living space. - Kitchens: Two full-size modern kitchens, equipped with top-of-the-line appliances, ideal for gourmet cooking and entertaining. - Guest Accommodation: Separate fully-equipped guest accommodation, perfect for visitors or potential rental income. - Energy Efficient: Equipped with solar panels and central heating, reducing the carbon footprint while ensuring optimal comfort throughout the seasons. - Pool: Dive into luxury with the climate-controlled pool, perfect for year-round relaxation and entertainment. - Proximity: Located just

+34 951 123 083 | +44 (0)330 179 8687 | info@idiliqestates.com Local 28, Edificio D, Centro de Negocios Puerta de Banús, N-340, Km 175, 29660 Nueva Andlucia

IDILIQ

ESTATES

minutes away from the heart of Malaga, this villa offers both serenity and the convenience of city life. Additional Features: - Lush landscaped gardens surrounding the property. - Private parking facilities. - Advanced security systems for peace of mind. - Close to renowned local schools, shops, and recreational facilities.



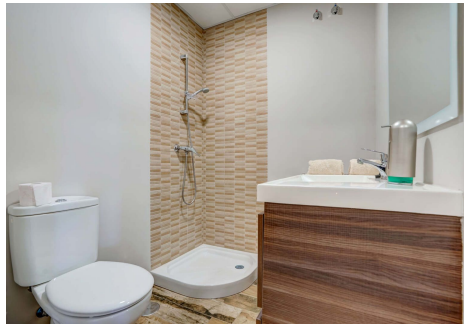
IDILIQ

ESTATES



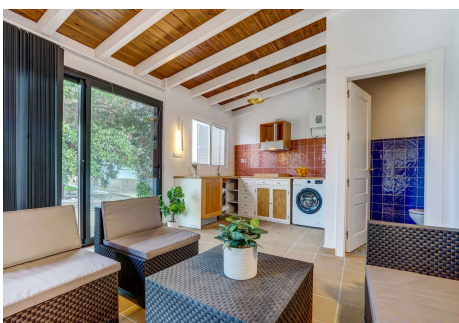
IDILIQ

ESTATES



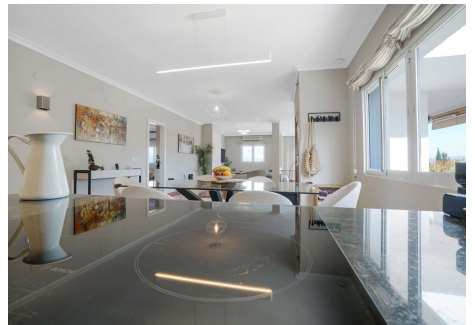
IDILIQ

ESTATES



IDILIQ

ESTATES



IDILIQ

ESTATES

