

IDILIQ

ESTATES



R4395025

📍 La Cala Golf

REF# R4395025 800.000 €

BEDS

3

BATHS

3

BUILT

277 m²

TERRACE

184 m²

KEY READY WITH OCCUPATION LICENCE! Welcome to this development, a place where beauty merges with serenity and luxury meets tranquility. Located in a majestic setting, our exclusive villa project offers a unique and awe-inspiring living experience. Inspired by the mythical concept of the Elysian Fields, this development is an earthly paradise where harmony and perfection converge. The villas have been meticulously designed to capture the essence of this ancient and revered place, where gods and heroes enjoyed an eternal and blissful existence. Each villa at this development is an architectural masterpiece, designed to provide an atmosphere of elegance and refinement. The spacious and luminous interiors blend with natural elements, creating a cozy and relaxing ambiance. Panoramic views of the majestic golf courses and serene landscapes will transport you to a dreamlike world. This development consists of only 15 exclusive independent villas, meticulously designed and built with the utmost attention to detail, ensuring the highest quality materials and cutting-edge design that combines clean lines and neutral colors to elegantly enhance the spaciousness of the living spaces, creating a perfect symbiosis with the surrounding nature. This development is nestled in a stunning natural environment, with lush gardens and charming landscapes. Here, you can escape the hustle and bustle of everyday life and immerse yourself in an oasis of peace and serenity. The expansive grounds offer the opportunity to enjoy the beauty of nature and live in harmony with

+34 951 123 083 | +44 (0)330 179 8687 | info@idiliqestates.com Local 28, Edificio D, Centro de Negocios Puerta de Banús, N-340, Km 175, 29660 Nueva Andlucia

IDILIQ

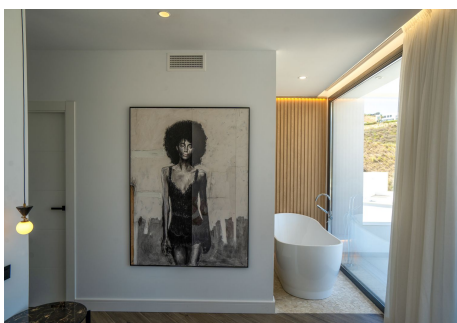
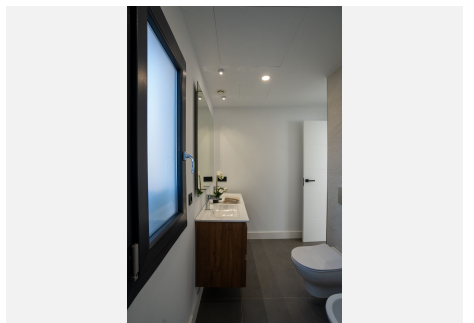
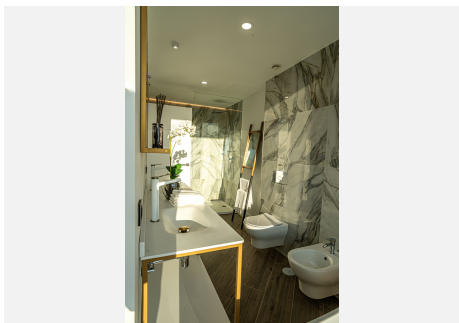
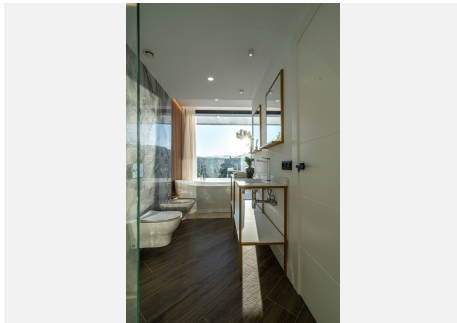
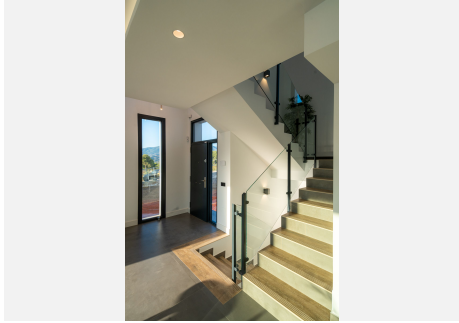
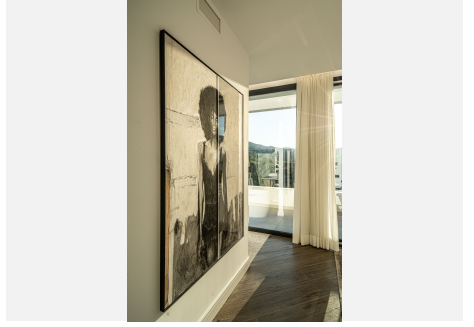
ESTATES

it. Discover paradise on earth at this development, where dreams come true and life takes on a deeper meaning. Immerse yourself in the essence of the Elysian Fields and experience a life of unparalleled luxury and serenity. Welcome to this development, where your expectations will be exceeded, and you will find eternal happiness.



IDILIQ

ESTATES



IDILIQ

ESTATES

