



R4367245

📍 Benalmadena

REF# R4367245 1.700.000 €

BEDS

5

BATHS

4

BUILT

750 m²

PLOT

2258 m²

TERRACE

64 m²

Located in Cortijo de Torrequebrada, this villa with a 2200 m² plot embodies simplicity and elegance. The 750 m² of useful area comprises a series of spacious, minimalist spaces, merging design with functionality. An extensive garden paints a serene green backdrop, dotted with mature plants, and a dazzling pool adds a refreshing touch. The generous garage offers space for six cars, providing a unique blend of comfort and luxury.

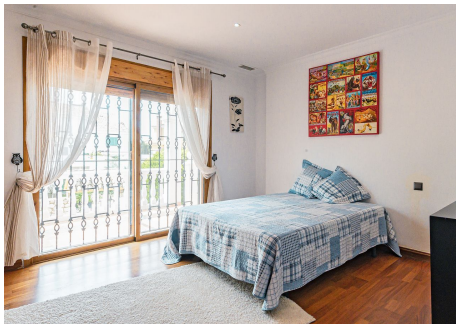
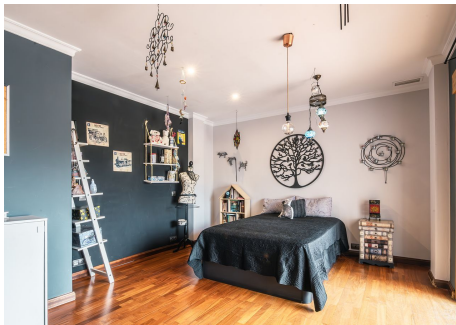
IDILIQ

ESTATES



IDILIQ

ESTATES



IDILIQ

ESTATES

