

# IDILIQ

## ESTATES



R4365847

📍 Estepona

REF# R4365847 305.000 €

BEDS

2

BATHS

2

BUILT

85 m<sup>2</sup>

This development is the new residential complex of new construction located in Estepona where you will find much more than a home, you will find a beautiful garden where you can extend your home. As if that were not enough, you will be able to enjoy a residence with common uses typical of a resort just a few minutes from the beach, the Senda Litoral, numerous golf courses, the Port of Estepona and La Duquesa, restaurants, supermarkets, Hospital de Alta Resolución de Estepona and connection to the A-7 and AP-7 through which to connect in less than an hour with Malaga or Gibraltar.

The complex is made up of 106 multi-family homes with 2 and 3 bedrooms with an underground parking space and storage room, designed under the criteria of sustainability and an open-space concept, offering optimized and contemporary homes, adapted for all customer profiles and designed for the new way of life where health, pleasure and work can be reconciled in your own home.

Within the large common areas we find a large number of plant species that surround the pool, as well as a gym, outdoor meditation area, spa, community room with co-working, beach volleyball court, children's area and putting green. All these common uses together with the prominence of the gardens with palm trees,

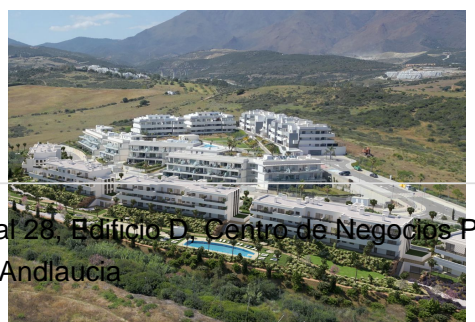
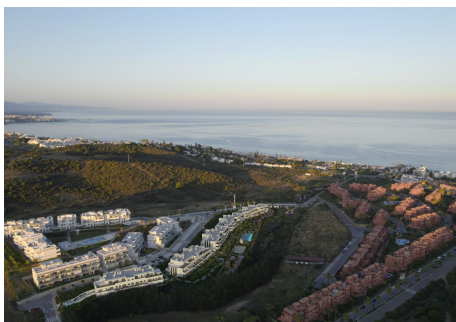
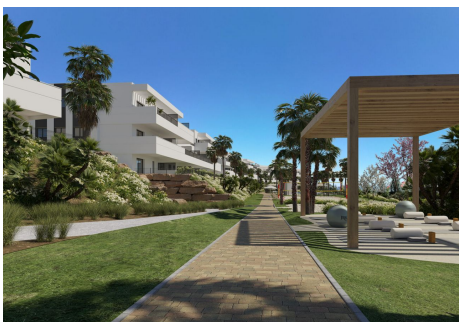
+34 951 123 083 | +44 (0)330 179 8687 | [info@idiliqestates.com](mailto:info@idiliqestates.com) Local 28, Edificio D, Centro de Negocios Puerta de Banús, N-340, Km 175, 29660 Nueva Andlucia



# IDILIQ

## ESTATES

citrus and aromatic plants, as well as paths through these green areas, make this development the perfect place to enjoy the climate, nature and tranquility.



+34 951 123 083 | +44 (0)330 179 8687 | [info@idiliqestates.com](mailto:info@idiliqestates.com) | Local 28, Edificio D, Centro de Negocios Puerta de Banús, N-340, Km 175, 29660 Nueva Andalucía