



R4329709

📍 San Pedro de Alcántara

REF# R4329709 2.950.000 €

BEDS

5

BATHS

5.5

BUILT

450 m<sup>2</sup>

PLOT

610 m<sup>2</sup>

TERRACE

220 m<sup>2</sup>

We are thrilled to present this modern south facing villa, just 250m from the Mediterranean Sea near San Pedro town. The property is built over two floors plus basement and rooftop terrace with views to mountains and the sea. Some of the features include solar panels, lightning with Wi-Fi dimmers controllable by mobile phone, preinstallation for electric blinds and thermo glazing on first floor. Excellent location for holidays and perfect for whole year living - there are great schools in vicinity and best golf courses are only short drive from home. New built villas are rare to find in this beachside location - this quality built villa represents excellent investment at reasonable price €/m<sup>2</sup>. Completion expected in early 2024. Do not miss it & book your appointment with us now! Please contact us for any additional information you may need.

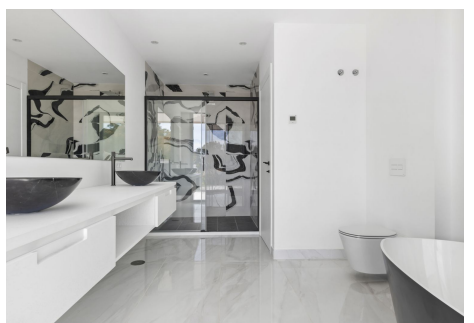
# IDILIQ

ESTATES



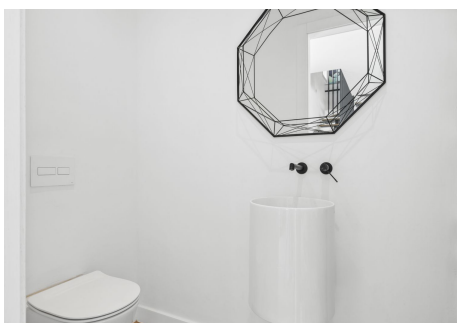
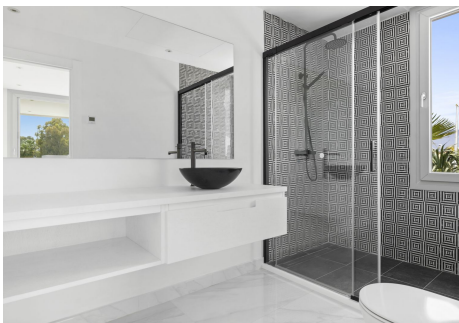
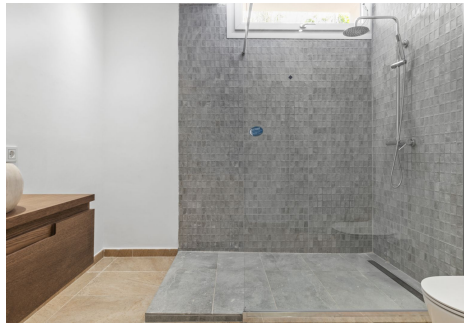
# IDILIQ

ESTATES



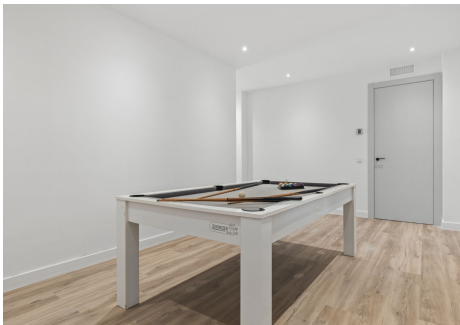
# IDILIQ

ESTATES



# IDILIQ

ESTATES



# IDILIQ

## ESTATES



GARDEN FLOOR

Garden floor built square meters  
 Living Area: 238.53 m<sup>2</sup>  
 Terrace: 19.51 m<sup>2</sup>

The master designer and developer acknowledge the importance of the building performance and the impact of the floor plan on the building's energy efficiency and sustainability. The floor plan is designed to optimize the building's energy efficiency and sustainability. The floor plan is designed to optimize the building's energy efficiency and sustainability. The floor plan is designed to optimize the building's energy efficiency and sustainability.



MAIN FLOOR

Main floor built square meters  
 Living Area: 122.40 m<sup>2</sup>  
 Terrace: 124.19 m<sup>2</sup>

The master designer and developer acknowledge the importance of the building performance and the impact of the floor plan on the building's energy efficiency and sustainability. The floor plan is designed to optimize the building's energy efficiency and sustainability. The floor plan is designed to optimize the building's energy efficiency and sustainability. The floor plan is designed to optimize the building's energy efficiency and sustainability.



FIRST FLOOR

First floor built square meters  
 Living Area: 89.51 m<sup>2</sup>  
 Terrace: 76.61 m<sup>2</sup>

The master designer and developer acknowledge the importance of the building performance and the impact of the floor plan on the building's energy efficiency and sustainability. The floor plan is designed to optimize the building's energy efficiency and sustainability. The floor plan is designed to optimize the building's energy efficiency and sustainability. The floor plan is designed to optimize the building's energy efficiency and sustainability.