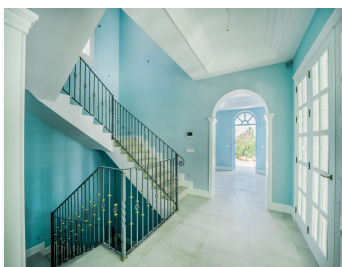


# IDILIQ

ESTATES



R4327726

📍 Marbella

REF# R4327726 3.700.000 €

BEDS

6

BATHS

7

BUILT

860 m<sup>2</sup>

PLOT

4500 m<sup>2</sup>

This villa is now ready to move in! Built in a unique environment this villa is surrounded by green hills of the municipality of Benahavis, famous for its rural beauty. Those who prefer to live in a quiet environment will fall in love with this admirable countryside. It is ideally located close to the five star golf resort - Marbella Club Golf Resort with its outstanding amenities. Here you can play golf every day or enjoy riding a horse. The development features its own charm, elegance and classical architecture combined with Andalusian landscapes. Beauty, privacy, modernity and comfort characterize this south-facing villa. The views from the property are spectacular, overlooking the Mediterranean and the picturesque surroundings. The house is only at 15 minutes away from Marbella and 10 minutes from Puerto Banus. The villa is located in a picturesque area. Living in the house you can always enjoy stunning views. You will not cease to admire the sea views that will open from the windows of the house. Also, the development offers breathtaking panoramic views of golf course, mountains, and green wooden hills. The villa has a 4.500 m<sup>2</sup> plot with a swimming pool and solar panels. There are covered terraces on the ground floor. You can use them for a barbecue zone and a lounge area. The house is well proportioned in terms of layout. The villa's interior is particularly elegant. On the ground floor there is a spacious living room. Next to the living room is the

+34 951 123 083 | +44 (0)330 179 8687 | info@idiliqestates.com Local 28, Edificio D, Centro de Negocios Puerta de Banús, N-340, Km 175, 29660 Nueva Andlucia

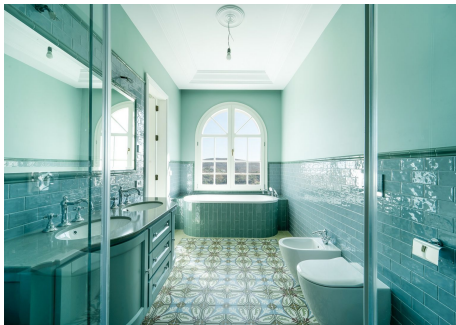
# IDILIQ

ESTATES



# IDILIQ

ESTATES



# IDILIQ

ESTATES

