

IDILIQ

ESTATES



R4323244

📍 La Mairena

REF# R4323244 475.000 €

BEDS

4

BATHS

2.5

BUILT

162 m²

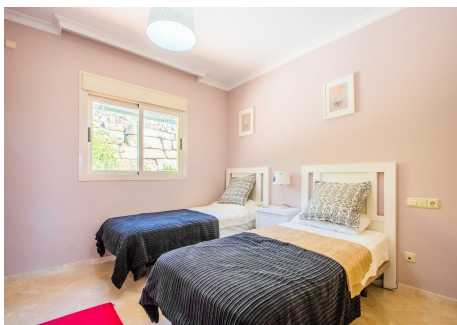
TERRACE

34 m²

This townhouse was constructed in 2009 and is situated in the desirable 'El Vicario II' neighborhood, which is part of the prestigious La Mairena area. It offers the perfect combination of stunning natural scenery with countryside views, including mountains and a glimpse of the Mediterranean Sea. Despite its peaceful surroundings, it is conveniently located just a 10-minute drive from Elviria's town center, 18km away from Marbella, and a 40-minute drive from Malaga Airport. The townhouse itself is of exceptional quality and comes with the added benefits of two underground parking spaces, a separate storage room, access to paddle tennis courts, and shared swimming pools. It truly provides an idyllic setting to fully immerse oneself in the year-round pleasant climate and embrace the captivating Spanish culture.

IDILIQ

ESTATES



IDILIQ

ESTATES

