



R4309492

 Benahavís

REF# R4309492    345.000 €

BEDS

2

BATHS

2

BUILT

120 m<sup>2</sup>

TERRACE

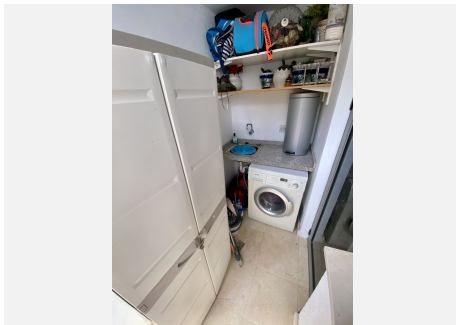
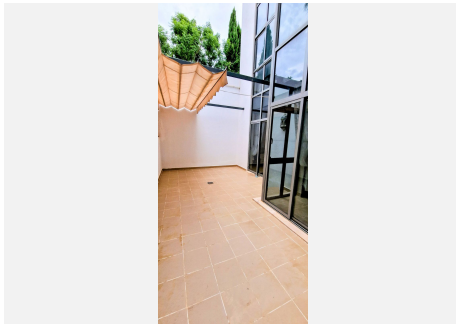
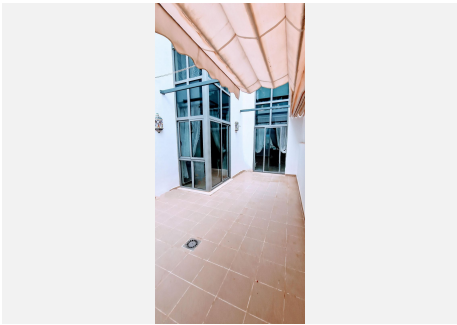
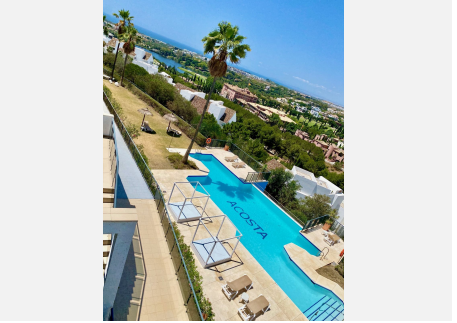
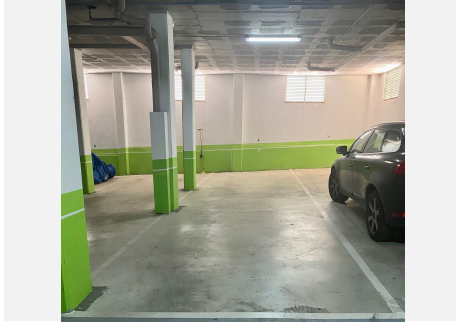
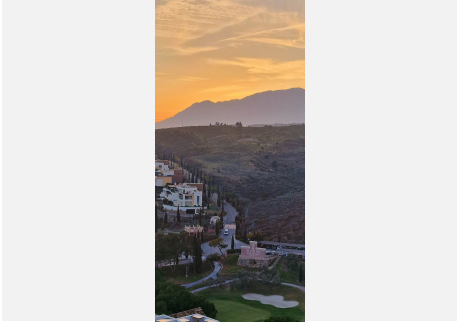
42 m<sup>2</sup>

Great southwest facing unit in a well maintained gated urbanisation. Nice sunlight thanks to its orientation and upper floor. Open views to the sea, Los Flamingos golf course and Sierra Bermeja mountains. Spacious interior with a nice layout, and two terraces (covered and open). The development has two infinity pools with panoramic views, padel tennis courts and well maintained gardens. There is a huge private underground parking (53m<sup>2</sup>), a storage room, and an extra spot destined for a golf buggy, all included in the price. You can walk to the magical 5\* Villa Padierna hotel with several restaurants and a 2000m<sup>2</sup> spa, and to the Los Flamingos golf course. All amenities such as a commercial area, the beaches of Costalita and beach clubs are 5mn away by car. A must see!



# IDILIQ

ESTATES



# IDILIQ

ESTATES

