

# IDILIQ

ESTATES



R4298134

 Benalmadena Costa

REF# R4298134 1.200.000 €

BEDS

3

BATHS

3

BUILT

150 m<sup>2</sup>

PLOT

1 m<sup>2</sup>

TERRACE

142 m<sup>2</sup>

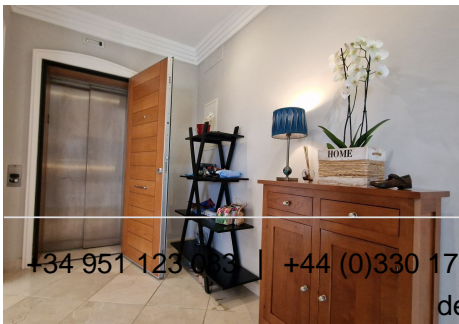
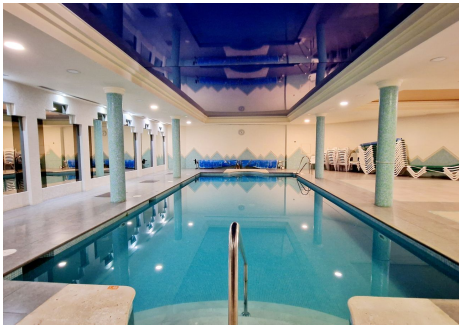
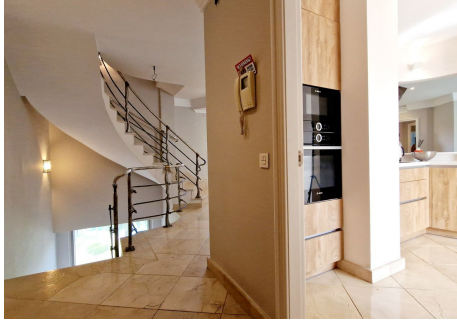
Benalmadena Costa, in the most emblematic and luxurious building of Benalmadena Costa you will find the ONLY duplex penthouse currently for sale. This private & exclusive residence features high-end amenities such as indoor swimming pool, gym, heated outdoor pool in the winter and sauna. The development is located within 350metres from the beach, directly opposite the manicured Parque de la Paloma and Selwo Marina. the airport is 16 minutes away, the Benalmadena Marina only 6min and Marbella 35min The exclusive lifestyle starts from the moment you walk in to your new home as it has direct & private access from the elevator. On the first level you will find a high-end kitchen with direct access to a very large west facing terrace with sea views, half of the terrace is covered and has a glass curtain ideal for the winter months. The beautiful living room is very spacious features a fire place and also has access to the large terrace as does the primary bedroom, this one features a spacious bathroom ( shower & separate bathtub) and lots of wardrobe space, while the guest bedroom also includes a modern bathroom with a Japanese style toilet. On the upper level, the 3rd bedroom with a toilet and direct access to the large solarium with the outmost privacy and a 6-person jacuzzi, of course we cant forget that you will enjoy 360° views of Benalmadena, its mountain range and the beautiful coastline. 2 underground parking spaces (with Electric car plugins and 2 storage rooms are included in the price) 12 hours security and 24 hrs cameras Electric

+34 951 123 083 | +44 (0)330 179 8687 | info@idiliqestates.com Local 28, Edificio D, Centro de Negocios Puerta de Banús, N-340, Km 175, 29660 Nueva Andlucia

# IDILIQ

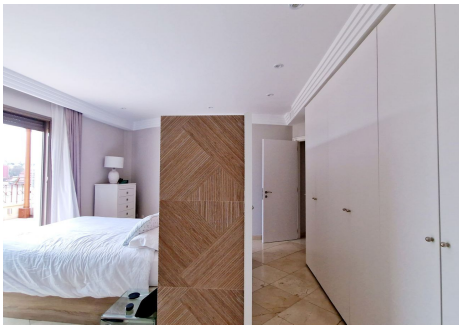
ESTATES

blinds Under floor heating in the bathrooms



# IDILIQ

ESTATES



Parque de la Paloma

# IDILIQ

ESTATES

