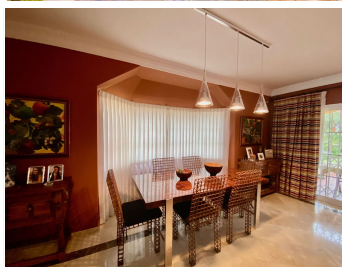


# IDILIQ

ESTATES



R4266268

📍 Atalaya

REF# R4266268 900.000 €

BEDS

4

BATHS

2.5

BUILT

290 m<sup>2</sup>

PLOT

1035 m<sup>2</sup>

TERRACE

50 m<sup>2</sup>

Detached Villa, Atalaya, Costa del Sol. 4 Bedrooms, 2.5 Bathrooms, Built 290 m<sup>2</sup>, Terrace 50 m<sup>2</sup>, Garden/Plot 1000 m<sup>2</sup>. Setting : Commercial Area, Beachside, Close To Golf, Close To Port, Close To Shops, Close To Town, Close To Schools, Close To Marina, Urbanisation. Orientation : South, West. Condition : Excellent. Pool : Communal. Climate Control : Air Conditioning, Fireplace. Views : Mountain, Garden, Pool. Features : Covered Terrace, Fitted Wardrobes, Near Transport, Private Terrace, Storage Room, Utility Room, Ensuite Bathroom, Marble Flooring, Double Glazing. Kitchen : Fully Fitted. Garden : Communal, Private. Security : Gated Complex, Entry Phone. Parking : Underground, Garage, Covered, More Than One, Private. Utilities : Electricity, Drinkable Water, Telephone. Category : Golf, Holiday Homes, Investment, Luxury, Resale, Contemporary.

# IDILIQ

ESTATES



# IDILIQ

ESTATES



# IDILIQ

ESTATES

