

IDILIQ

ESTATES



R4257898

📍 Elviria

REF# R4257898 449.000 €

BEDS

3

BATHS

3

BUILT

222 m²

A HOME IN ELVIRIA LARGE ENOUGH FOR FULL TIME FAMILY LIVING. Spacious and bright Marbella East apartment in the lovely residential community called las Terrazas de Santa Maria. Overlooking Elviria's principal golf course, this large 3 bedroom home is in excellent condition and benefits from plentiful light and great views. The property has a large parking space and storeroom which are easily accessed via the automated doors of the communal garage. From here an elevator carries the residents to the front door of this lovely Marbella East apartment. Open the door into a small hallway which in turn opens into the impressive lounge area. On adjacent walls are floor to ceiling windows giving not only light but superb views of the surrounding countryside. The fabulous terrace has been fitted with glass curtains which allows a huge amount of extra space: of great importance for any family who can happily live full time in this excellent Elviria apartment. The kitchen has been fully reformed and includes a utility room where washing machine and cleaning tools can be kept conveniently located. The living room and dining room combine in a large open area which has various parts to it allowing for a very cosy seating area where stunning mountain views can be enjoyed via the floor to ceiling window. There are 3 bedrooms and each has it's own bathroom. With a superb layout (see included floor plan) all of the sleeping areas and bathrooms are separated by the communal areas and so there is privacy and comfort for all. This property is the best available in las

+34 951 123 083 | +44 (0)330 179 8687 | info@idiliqestates.com Local 28, Edificio D, Centro de Negocios Puerta de Banús, N-340, Km 175, 29660 Nueva Andlucia

IDILIQ

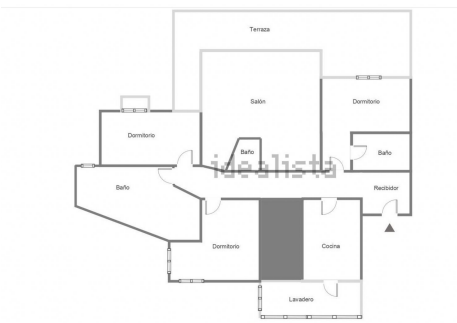
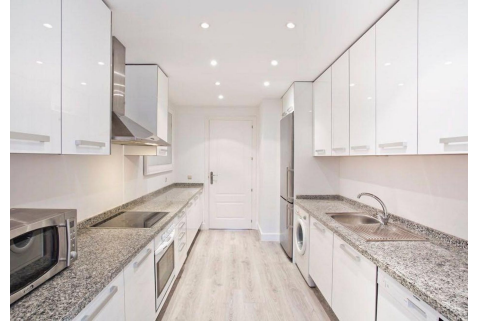
ESTATES

Terrazas de Santa Maria due to it's easy access and great internal space. Only to be visited by very serious clients please.



IDILIQ

ESTATES



IDILIQ

ESTATES

