

R4250371

📍 Manilva

REF# R4250371 409.500 €

BEDS

4

BATHS

2

BUILT

220 m²

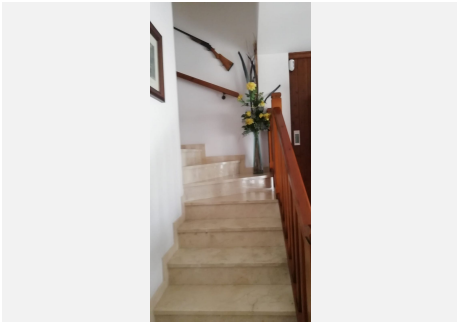
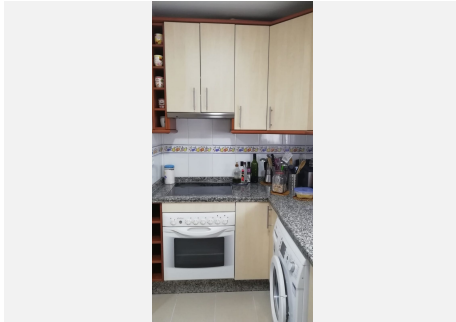
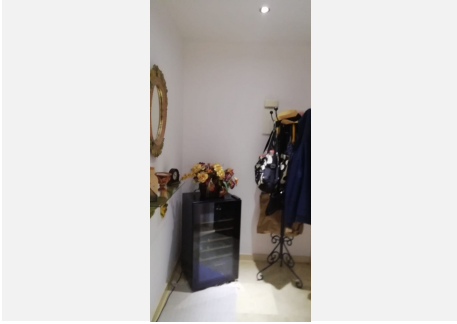
TERRACE

80 m²

Exceptional townhouse at the entrance of Manilva, with panoramic views of the sea and the mountains, four levels that make it a property with many possibilities for changes. The property is in perfect condition fully furnished, with an underground garage and direct access to the house. On the first level we have a complete bathroom, kitchen, living room, a large terrace that will allow you to enjoy the panoramic views of the sea and the mountains. On the second floor 3 bedrooms and a bathroom, on the third level a large bedroom with the possibility of making a bathroom and a large terrace with panoramic views of the sea and mountains. The basement floor has a large garage with space for a large storage room and space for two cars. The community has a garden and a swimming pool facing and overlooking the sea. In this group it is constituted by approximately 15 owners. The property is located 3 minutes by car to the beach, gas stations, supermarkets, shopping centers, very close to the port of La Duquesa, Sotogrande and Estepona. Ideal as a regular or vacation home due to its location and proximity to all the services that may be required.

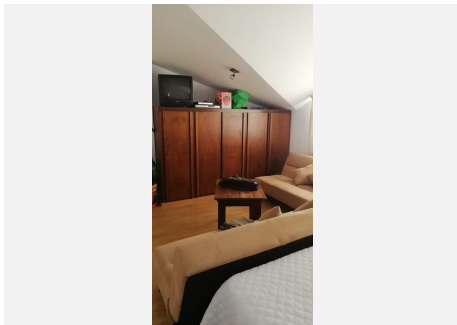
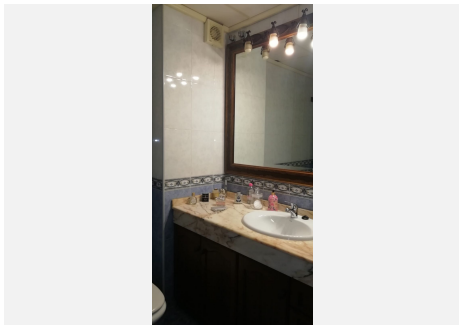
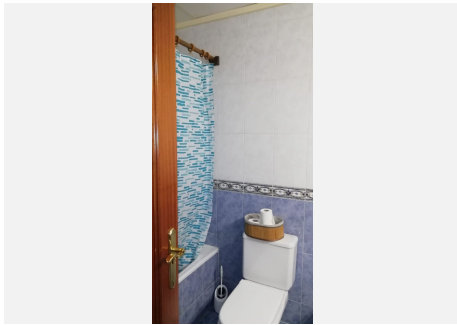
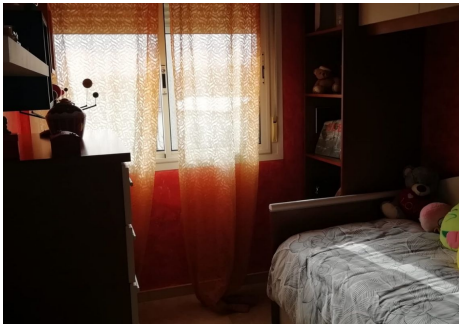
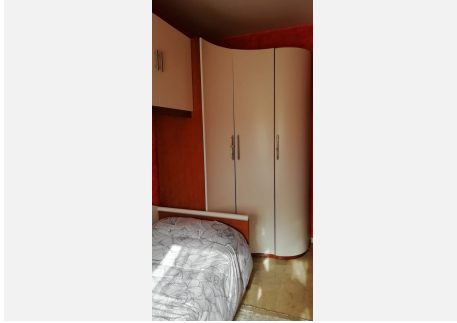
IDILIQ

ESTATES



IDILIQ

ESTATES



IDILIQ

ESTATES

