

IDILIQ

ESTATES



R4197013

📍 Alhaurín de la Torre

REF# R4197013 2.100.000 €

BEDS

5

BATHS

5

BUILT

769 m²

PLOT

890 m²

TERRACE

115 m²

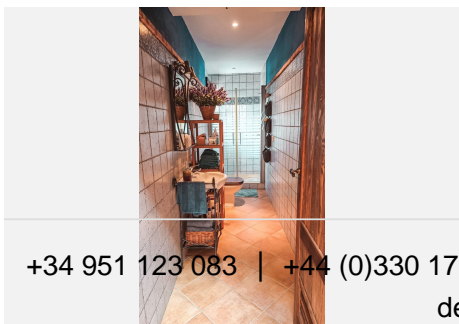
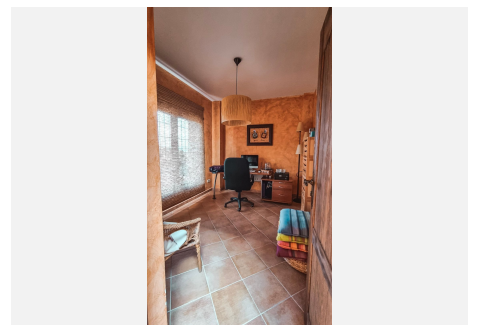
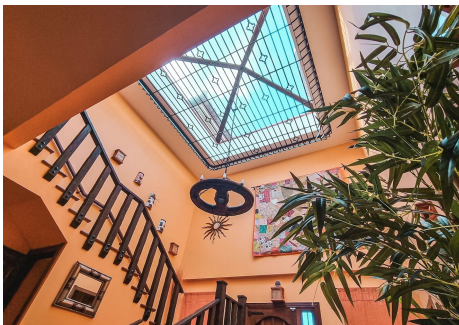
PRICE DROP!! Before 2.100.000€. Impressive villa in Alhaurin de la Torre in the El Lagar urbanization, one of the most sought-after urbanizations in all of Alhaurín due to its magnificent location and the beauty of the place right on the slope of Mount Jabalcuza. Close to all services, schools, supermarkets, medical centers and just 15 minutes from the beach. Perfect for those who like to live near the coast but away from the hustle and bustle of the first lines. Built with top quality materials and an unbeatable finish. You will not find a house with better finishes than this one. The design is very cozy, Mediterranean and rustic with its walls lined with natural limestone. The house would be fully furnished, ready to move into in the best conditions. Both the furniture and the appliances are of excellent quality. Divided into three floors that can be accessed via a staircase or elevator. On the main floor is the entrance hall with an impressive skylight that illuminates the entire house, the island kitchen with low-consumption appliances, a full bathroom, two bedrooms, one of them used as an office, and the living room with access to the garden. and the pool. On the upper floor we have 3 very spacious bedrooms, each with its own full bathroom. The master bedroom has a Jacuzzi at the foot of the bed, a dream dressing room and a terrace with views of the valley and the mountains. Garden with barbecue area, covered terrace and saltwater pool. In the basement we find parking for 3 cars, living room, kitchen, bathroom, games area, gym, laundry and pool machinery area. Climait insulation, aluminum

+34 951 123 083 | +44 (0)330 179 8687 | info@idiliqestates.com Local 28, Edificio D, Centro de Negocios Puerta de Banús, N-340, Km 175, 29660 Nueva Andlucia

IDILIQ

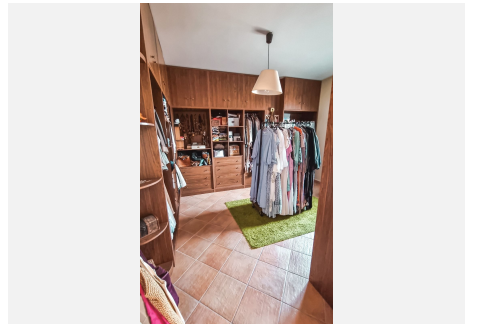
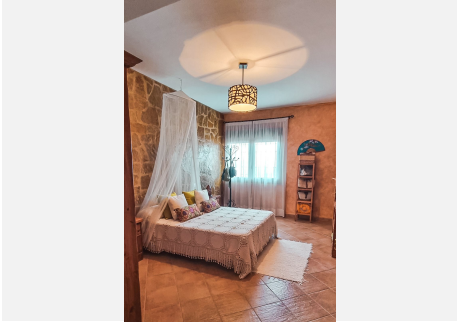
ESTATES

carpentry, security system with cameras and alarms, armored solid wood door. Hot cold air. Optical fiber



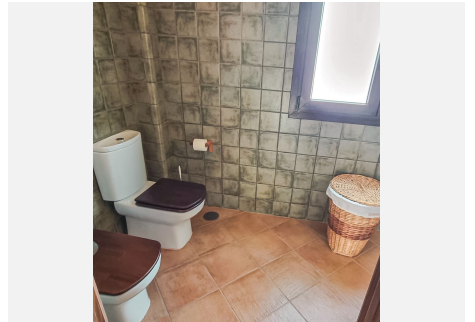
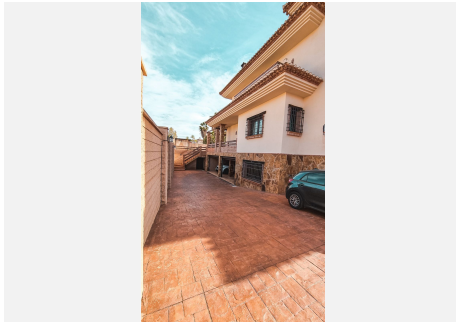
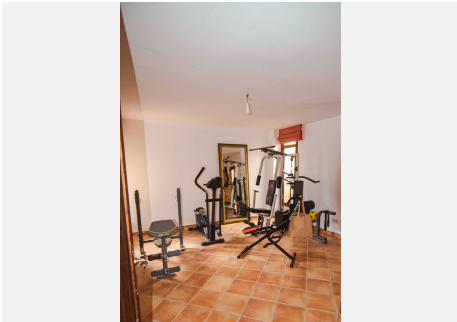
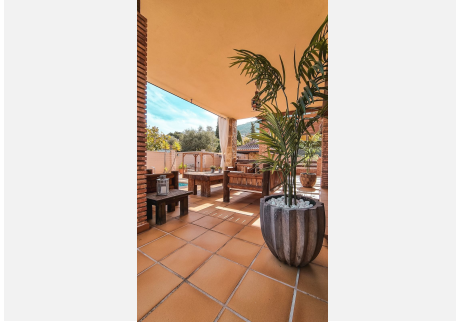
IDILIQ

ESTATES



IDILIQ

ESTATES



IDILIQ

ESTATES

