



HOUSE 8 BEDROOMS 10 BATHROOMS IN GUADALMINA BAJA

 Guadalmina Baja

REF# R4189078 9.950.000 €

BEDS

8

BATHS

10

BUILT

1900 m²

PLOT

4800 m²

TERRACE

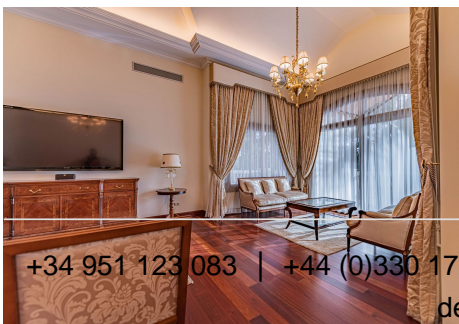
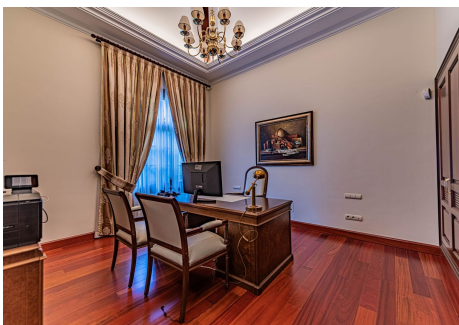
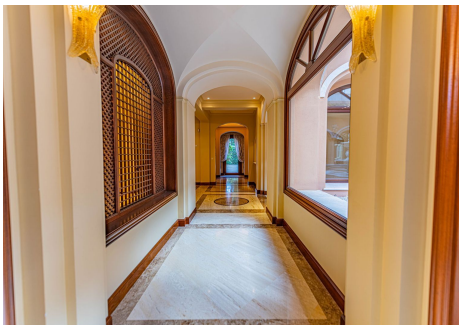
300 m²

Luxury andalusian style villa that resides magnificently in one of the most prestigious and sought-after urbanizations in Marbella, Guadalmina Baja, only 100 meters from the beach and 5 minutes from Puerto Banus. The highest quality materials have been used in the design and construction of this elegant 8-bedroom home. The natural light throughout is accentuated by high ceilings and a multi-level floor plan. The villa offers a beautiful entrance hall leading to an Andalusian patio, a large fully fitted kitchen, 2 en-suite bedrooms, an elegant formal dining room and an expansive living area that leads to the covered terraces and lavish gardens. The first floor offers 3 large en-suite bedrooms and an elegant master suite with his and hers walk-in wardrobe and a private terrace with garden & partial sea views. This extraordinary property has been especially designed for a luxury lifestyle and offers a dream entertainment area that includes a pool billiard room, a fully equipped fitness suite, a Spa with sauna, jacuzzi, Turkish bath and ice fountain, a cinema room and a signature wine cellar, making this a haven of recreation. The manicured tropical gardens feature a large swimming pool, a small lake with waterfall, and a summer pergola under mature palm trees. The villa enjoys absolute privacy. Other features of this extraordinary property include: garage for 6+ cars, +34 951 123 083 | +44 (0)330 179 8687 | info@idiliqestates.com Local 28, Edificio D, Centro de Negocios Puerta de Banús, N-340, Km 175, 29660 Nueva Andlaucia

IDILIQ

ESTATES

private lift, under-floor heating throughout, domotic system, solar panels, separate staff apartment, etc.



+34 951 123 083 | +44 (0)330 179 8687 | info@idiliqestates.com Local 28, Edificio D, Centro de Negocios Puerta de Banus, N-340, Km 175, 29660 Nueva Andalucía

IDILIQ

ESTATES



