

# IDILIQ

## ESTATES



R4181479

📍 Sierra Blanca

REF# R4181479 6.500.000 €

BEDS

6

BATHS

6

BUILT

1160 m<sup>2</sup>

PLOT

2700 m<sup>2</sup>

TERRACE

250 m<sup>2</sup>

Located in one of the most sought after residential areas of Marbella, Sierra Blanca, this immaculate and sunny villa was built with great attention to detail. Due to its secluded position the property enjoys privacy and tranquillity, and its elevated position allows for relaxing views across the intermittent areas and out to sea. The views of Sierra Blanca and its proximity to the center of Marbella (only 3 km) have made this area very popular among those seeking tranquility and security (there is 24-hour security, surveillance cameras and the area is closed by the night with security barriers). Proximity to all services and beaches. The ground floor features a high ceilinged entrance hall comprising a staircase to the upper floor, a spacious lounge with access to the covered terrace and garden, lounge with a fireplace to the right and a separate formal dining room to the left of the lounge. The dining room is connected to the fully equipped kitchen with appliances and a dining table. Four bedrooms with private full baths on this level. Upstairs is the master bedroom with a full bathroom, double marble top vanities, fitted wardrobes and open terrace with fantastic coastal views. There are two other bedrooms each with en-suite bathrooms. terrace with the master bedroom facing north with views of the shell equipped with kitchen. The lower level includes staff accommodation with lounge, bedroom and shower, toilet, garage for two cars, storage areas, large entertainment room with bar area and TV room, sauna, Jacuzzi. Hot water with underfloor heating throughout the house, hot / cold air conditioning,

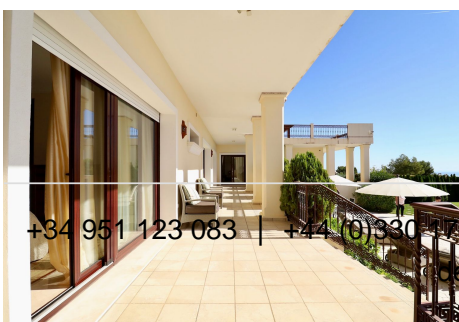
+34 951 123 083 | +44 (0)330 179 8687 | [info@idiliqestates.com](mailto:info@idiliqestates.com) Local 28, Edificio D, Centro de Negocios Puerta de Banús, N-340, Km 175, 29660 Nueva Andlucia



# IDILIQ

## ESTATES

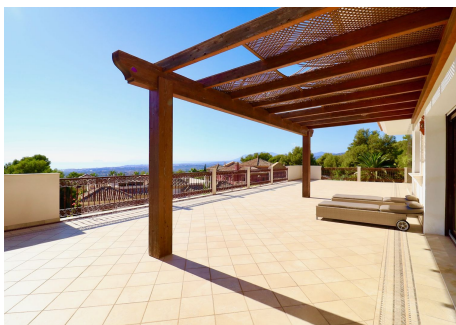
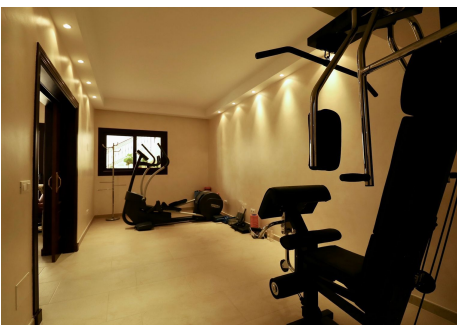
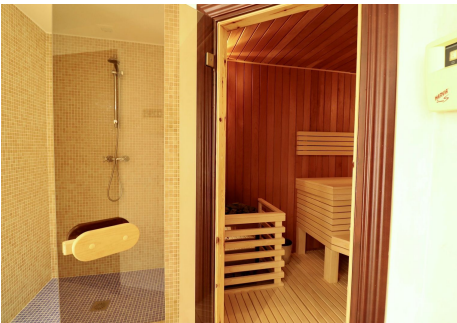
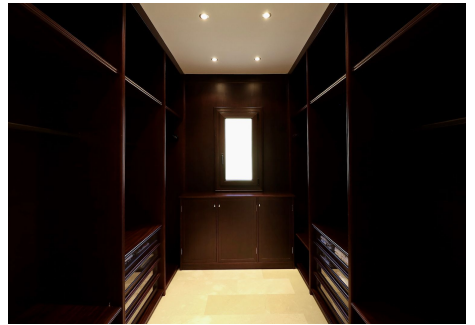
wooden carpentry with double glazing and marble flooring throughout the house. The outside area consists of a mature garden, illuminated and irrigated, with a swimming pool.





# IDILIQ

ESTATES





# IDILIQ

ESTATES

