

R4103350

📍 Sotogrande Alto

REF# R4103350 4.750.000 €

BEDS

4

BATHS

4.5

BUILT

498 m²

PLOT

2560 m²

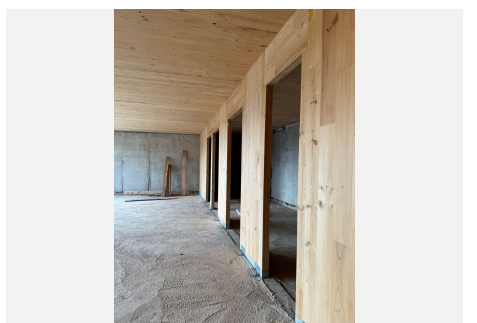
TERRACE

200 m²

Spectacular villa under construction in La Reserva, Sotogrande. Perfect orientation to the south, providing wide views of the Sea and mountains. The new build property due for completion shortly lies on a 2,560 m² plot. Property built with cross-laminated timber structure system (CLT). The pioneering construction method prevents cracks to the structure in future due to its flexible mobility. The villa offers an open plan living room, 4 en suite bedrooms with the option to create an additional suite, as well as utility room and private garage. Perfect location close to Sotogrande International School, 10 minutes' drive to Sotogrande Port.

IDILIQ

ESTATES



IDILIQ

ESTATES

