



R4066786

📍 Benalmadena Costa

REF# R4066786 949.000 €

BEDS

5

BATHS

4

BUILT

290 m²

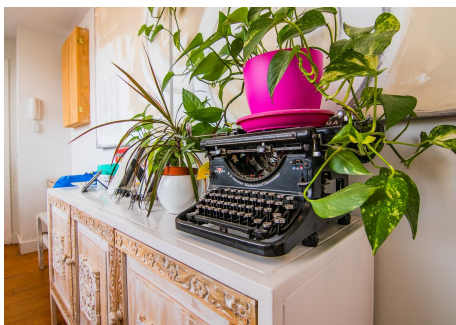
TERRACE

12 m²

FRONT APARTMENT TO THE SEA WITH ITS PRIVATE BEACH!! There is nothing on the market like this property, it is like living on a boat, since this building is built on the beach itself. The property consists of 300 square meters, it is a unique farm that has been divided into two independent floors. THE MAIN HOUSE: It has a useful area of ??160 square meters. It is distributed in wide entrance. Laundry area. Beautiful living room with kitchen in open space. terrace of more than 10 square meters. 2 bedrooms and 2 bathrooms Dressing room . The main bedroom has a luxurious en-suite bathroom. From the entire property there are PANORAMIC SEA views SECOND HOUSE: (currently the owner rents, it has its own entrance, you can see in the photos the two entrances of both floors, totally independent) It consists of a useful area of ??110 square meters. It is distributed in wide entrance. Living room with kitchen in open space. terrace of more than 6 square meters. 3 bedrooms and 2 bathrooms From the same building you go directly to a PRIVATE BEACH. It has a community garage. For more information and visits do not hesitate to contact one of our agents.

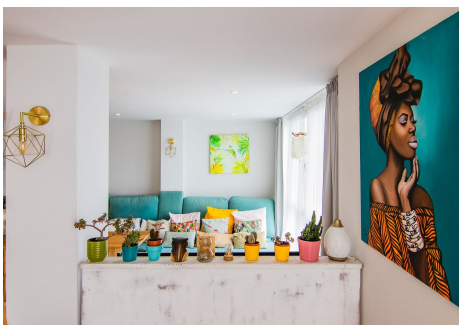
IDILIQ

ESTATES



IDILIQ

ESTATES



IDILIQ

ESTATES

