



R4042702

📍 Casares

REF# R4042702 850.000 €

BEDS

4

BATHS

2

BUILT

220 m²

PLOT

30000 m²

TERRACE

80 m²

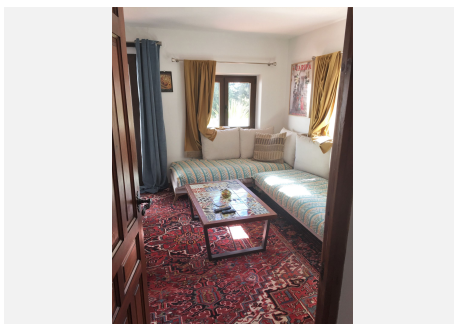
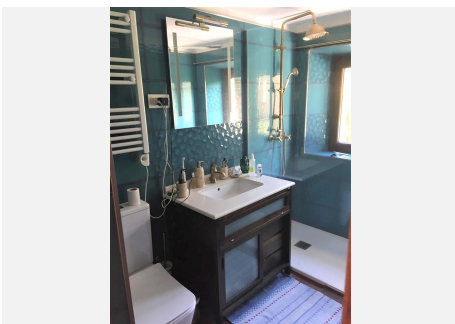
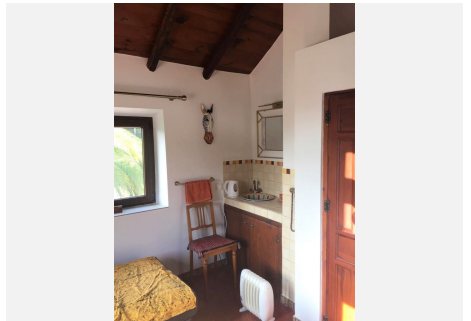
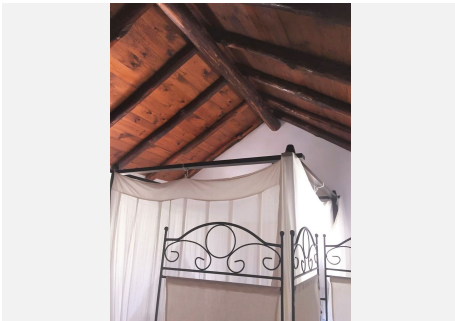
Magnificent finca with pool in Casares, Costa del Sol, 9 km from Estepona, 1 hour drive to Malaga airport and 30 minutes drive to Gibraltar. The beautiful finca with pool of 30.000 m² is located in the nature park in Casares, 8 km from the beach and 10 km from shops. The 120 m² house, which was completely renovated in 2020, has a total of 3 bedrooms (two of which are on the 1st floor), 2 bathrooms with shower, a large eat-in kitchen with fireplace and access to the terrace and garden, 1 large living room with fireplace, storage room. The house was completely restored to a high standard in 2020. It has new PVC windows, tiled floor, alarm system. Next to the house is a small house (casita) of 15 m² in which two more people can sleep comfortably. The house is surrounded by terraces and a 1000m² fenced garden with fruit trees (orange, lemon, grapefruit) and palm trees. It is possible to cover the terrace and form a unit between the casita and the main house. The house is connected to the local electricity and water supply. It is fully equipped with high quality furniture. A 2021 paved road leads to the property. There are 2 wells on the well cultivated terrace area of 30000 m². The plot is partially fenced. 2 bridges lead over the "arroyo Jordana" stream to the partly forested areas; here are cork oak trees, hazelnut trees, vines. There is also a small tool shed of 5m². The house has all the machines for the maintenance and care of the garden. The wide entrance to the property has space for several cars. There is also a carport. The 8 x 4 m pool invites you to swim in

+34 951 123 083 | +44 (0)330 179 8687 | info@idiliqestates.com Local 28, Edificio D, Centro de Negocios Puerta de Banús, N-340, Km 175, 29660 Nueva Andalucía

IDILIQ

ESTATES

summer. This has been equipped with a new pool pump. Features: Land: 30000 m2 House: 120m2
Bedroom: 4th Bathrooms: 2 shower rooms Casita: 15 m2 Shed: 5 m2 Terraces: 36m2, 20m2, 20m2



IDILIQ

ESTATES

