

IDILIQ

ESTATES



R4036432

📍 Coín

REF# R4036432 375.000 €

BEDS

6

BATHS

2

BUILT

203 m²

PLOT

150 m²

TERRACE

40 m²

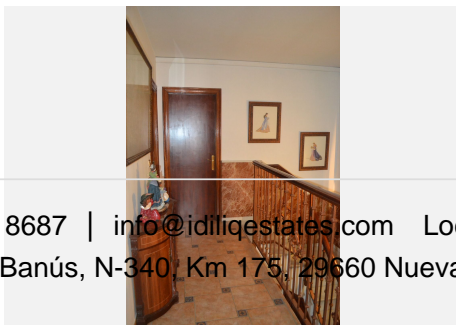
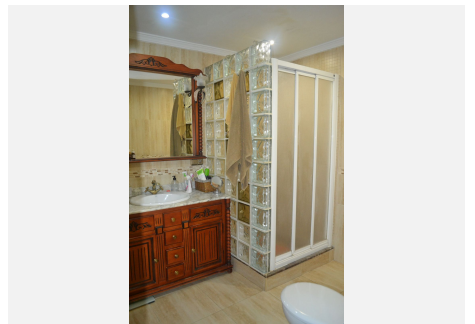
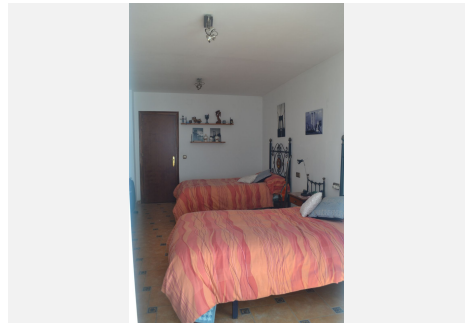
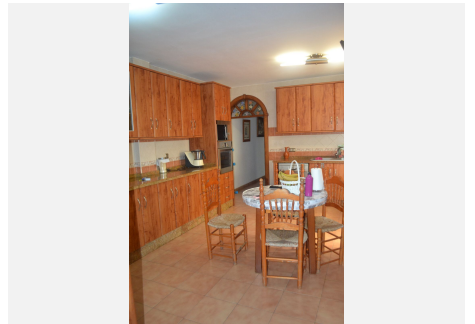
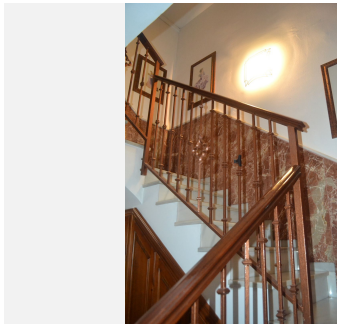
For sale and for rent. For rent only is the top part for 600 euros a month. Lovely large family home located in the centre of Coín, walking distance to schools, centro salud, feria ground where they have the markets, restaurants. Roadside parking and nice quiet road. You have a children's park 2 doors down. This property was originally built in 1999 but added to with all paperwork and licences in 2007. This can be segregated to be made into 2 apartments, or use it as a large family house or B&B, there is a lot of potential. As you enter the property through a nice large door into the hallway you enter the large open plan living / dining room with a nice corner fireplace. You can access the patio where the barbecue is located and at the end of this is a storage room and access via a spiral staircase to the second floor terrace, laundry area, etc.. Back into the living room you enter the large kitchen, with double fridge / freezer, eat in area as well as access to the same patio. Down the corridor you have 2 bedrooms and a bathroom. The larger bedroom has air conditioning. From the living room you have the stairs up to the second floor, at the front of the house you have 2 double bedrooms with plenty of wardrobes. You have a storage cupboard on the landing for towels, linen, etc.. and you have the other 2 bedrooms and family bathroom. From one of the bedrooms you access the second floor terrace, which has sun all day to enjoy the Spanish weather along with access to the laundry and storage room. The property has solar water system so you pay low electric as you have a wood burner

+34 951 123 083 | +44 (0)330 179 8687 | info@idiliqestates.com Local 28, Edificio D, Centro de Negocios Puerta de Banús, N-340, Km 175, 29660 Nueva Andalucía

IDILIQ

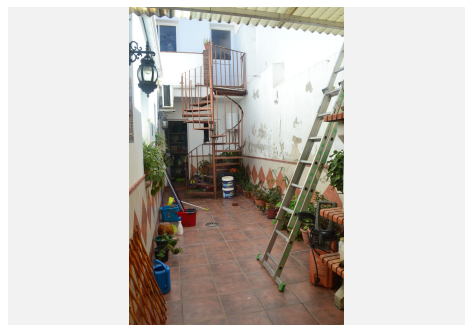
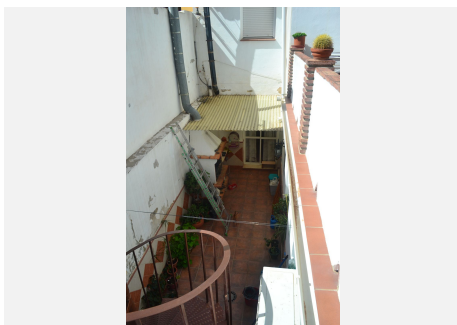
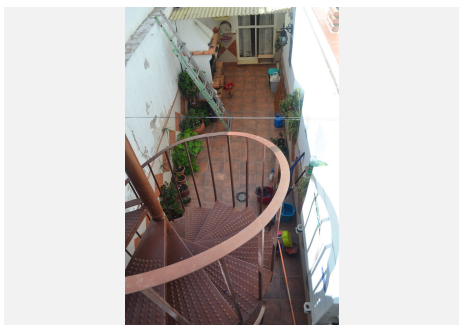
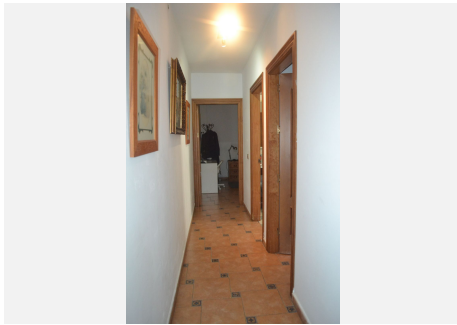
ESTATES

fireplace for nice heat in winter. It's a very large property that is move in ready. You are less than 10 minutes to the Guadalhorce hospital and 20 from Malaga and the airport. A must see!



IDILIQ

ESTATES



IDILIQ

ESTATES

