



R4011970

📍 Alhaurín el Grande

REF# R4011970 595.000 €

BEDS

5

BATHS

3

BUILT

275 m<sup>2</sup>

PLOT

4622 m<sup>2</sup>

TERRACE

42 m<sup>2</sup>

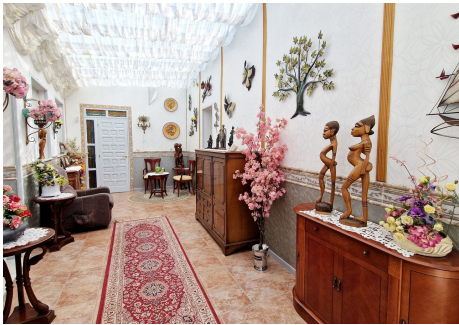
Unique country finca for sale in Alhaurin el Grande. As you enter the grounds through the large, impressive gates, you will find ample parking with a driveway that leads you directly from the swimming pool to the house and the enclosed garage. As you enter the property you are presented with a light and bright reception area. On the left hand side you have a large lounge, followed by a second lounge, both lounges are approximately 30m<sup>2</sup>. In front of the reception area you have a large double bedroom with ensuite bathroom and with direct access to the patio. To the right you have access to a private dining area, with fireplace, a kitchen and a sunny enclosed terrace. Furthermore this leads you to another 2 double bedrooms, 1 single bedroom and another bathroom. At the back of the property you will find a laundry room. At the back the the house there is a small independent 1 bedroom house for guests. The property also consists of an extensive back patio with gazebo overlooking the gardens and orange orchards. Infront of the property there is a beautiful wooden retreat next to the beautiful pool, perfect to relax on those sunny days. Consisting of a 4 bedroom house & a 1 bedroom guest house. Set on a large plot with pool, gardens and orange orchard. Finca - Cortijo, Alhaurín el Grande, Costa del Sol. 5 Bedrooms, 3 Bathrooms, Built 275 m<sup>2</sup>, Terrace 42 m<sup>2</sup>, Garden/Plot 4622 m<sup>2</sup>. Setting : Country, Close To Golf, Close To Town, Close To Schools, Close To Forest. Orientation : South West. Condition : Good. Pool : Private. Climate Control : Air

+34 951 123 083 | +44 (0)330 179 8687 | info@idiliqestates.com Local 28, Edificio D, Centro de Negocios Puerta de Banús, N-340, Km 175, 29660 Nueva Andlucia

# IDILIQ

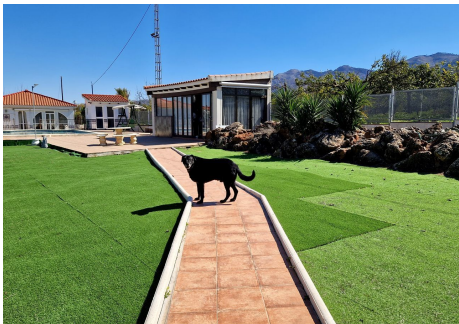
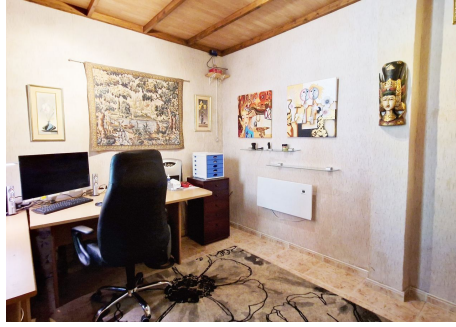
ESTATES

Conditioning, Fireplace. Views : Country, Panoramic. Features : Covered Terrace, Fitted Wardrobes, Near Transport, Private Terrace, Guest House, Storage Room, Utility Room, Ensuite Bathroom, Double Glazing. Furniture : Optional. Kitchen : Fully Fitted. Garden : Private, Easy Maintenance. Security : Alarm System. Parking : Garage, Private. Utilities : Electricity, Drinkable Water. Category : Resale.



# IDILIQ

ESTATES



# IDILIQ

ESTATES



# IDILIQ

ESTATES

