

# IDILIQ

ESTATES



R3852316

📍 NEW GOLDEN MILE

REF# R3852316 11.900.000 €

BEDS

9

BATHS

9

BUILT

2000 m<sup>2</sup>

PLOT

5500 m<sup>2</sup>

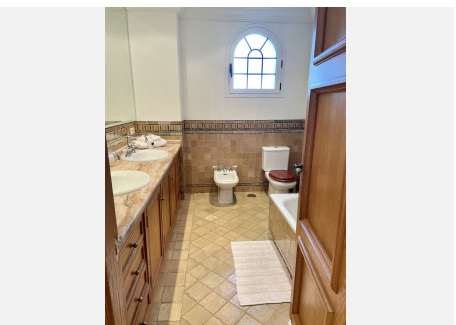
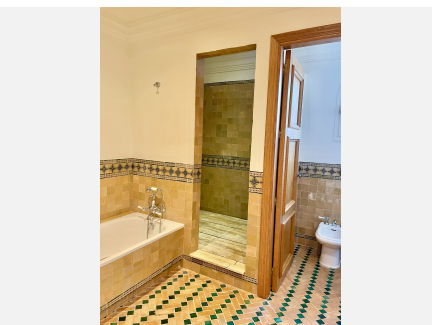
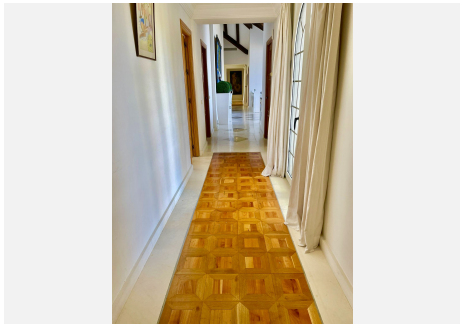
TERRACE

300 m<sup>2</sup>

SPECTACULAR FIRST LINE MANSION with an impressive double height entrance hall and wooden beams. Two stairs on either side lead to the upper floor. The large living room with terracotta and wood floors opens onto the large terrace. Separate dining room. Guest toilet and an office with built-in wardrobes. Two large bedrooms with en-suite bathrooms. Laundry room, pantry, service bathroom. On the upper floor is the large master bedroom with a vaulted ceiling decorated with wooden beams and a "mezzanine" that can be used as a library. It also has two separate dressing rooms and a spacious bathroom with a bathtub, shower and combined wood and clay floors. On this same floor there are 5 more bedrooms with four bathrooms and a guest toilet. In the basement there is a huge 600m<sup>2</sup> garage for more than 10 cars, a service bedroom and bathroom and two water tanks. Exterior carpentry is made of aluminum with double glazing and electric shutters. The interior carpentry is solid oak.

# IDILIQ

ESTATES



# IDILIQ

ESTATES

