

IDILIQ

ESTATES



R3805369

📍 Benahavís

REF# R3805369 4.750.000 €

BEDS

7

BATHS

7

BUILT

1022 m²

PLOT

5082 m²

TERRACE

218 m²

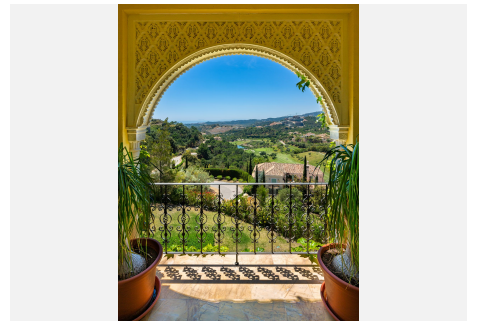
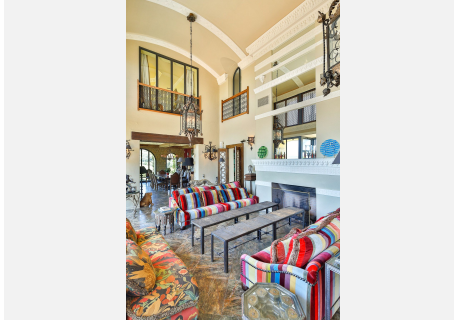
Have you ever wanted to live in a Moorish palace? This dream luxury villa situated in an elevated plot offering uninterrupted views over the golf course all the way to the Mediterranean Sea, Atlas Mountains and Gibraltar. This spacious villa blends Alhambra Moorish architecture (using the same craftsmen who restored the prestigious Hotel Alhambra Palace) with traditional and modern style in a truly individual way. It is built over four floors around a central atrium with fountains and electronic skylight. The main entrance to the property is located at ground level, which comprises a large fully fitted kitchen with informal dining area and connected to the formal dining area, outside covered terrace with built-in barbeque offering beautiful area to alfresco dining, cozy room to the side of the Kitchen which can be used as an informal TV room, guest cloakroom, large vaulted lounge complete with working fireplace and floor to ceiling sliding steel doors giving direct access to the open terrace, on the side of the living room is a library. The first floor distributes in 5 large double bedrooms all with en-suite bathrooms, each bedroom has its own large terrace with unrestricted views. The lower ground floor comprises; large indoor outdoor heated infinity pool, which has electrically operated solar panel on the pool effortlessly, retracts at the touch of a button, gymnasium, separate changing room for the pool and gymnasium, cinema room, games room, laundry room, and two completely separate apartments. Finally, a solarium with spectacular 360-degree views over the golf course,

+34 951 123 083 | +44 (0)330 179 8687 | info@idiliqestates.com Local 28, Edificio D, Centro de Negocios Puerta de Banús, N-340, Km 175, 29660 Nueva Andlucia

IDILIQ

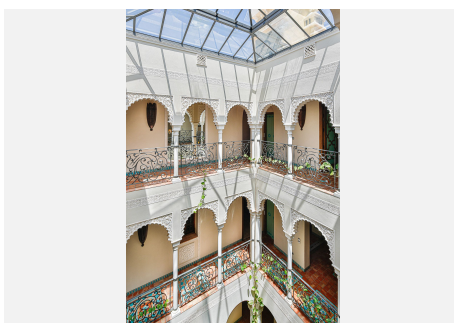
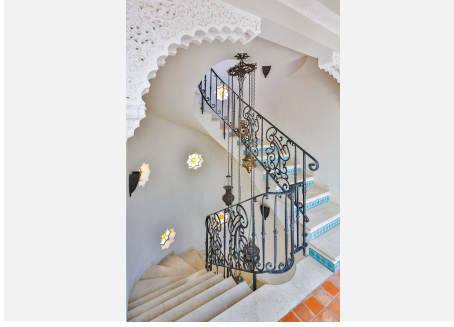
ESTATES

of the surrounding mountains and countryside and the coats of Spain and Africa a covered kitchenette, dining area, covered and uncovered leisure areas. There is a lift from the lower level to every floor including solarium. A truly unique property.



IDILIQ

ESTATES



IDILIQ

ESTATES

