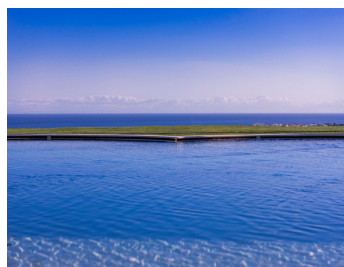
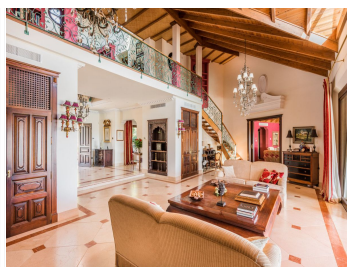


# IDILIQ

ESTATES



R3643751

📍 Nueva Andalucía

REF# R3643751 11.950.000 €

BEDS

8

BATHS

9

BUILT

2000 m<sup>2</sup>

PLOT

24000 m<sup>2</sup>

Positioned at the end of a cul-de-sac, a magnificent driveway embraced by lavish gardens is followed by a beautiful porte-cochère that leads you into a 1 700 m<sup>2</sup> villa. A double-height hallway overlooks the main living spaces and opens to a beautiful Bermuda grass garden and a pool area with unique panoramic sea and mountain views. Outside, you will find an enormous wrap-around covered terrace with several different seating and dining areas - an ideal environment for relaxation! The heated saltwater pool with a great rock cascade feature is accompanied by a gazebo with an outdoor kitchen and barbecue area. The main centrepiece of this property is an open gallery with two libraries overlooking the double-height ceiling living room leading into a large and spacious country-kitchen with the latest appliances, accompanied by a beautiful dining room. The ground floor also incorporates a spacious lounge area accompanied by four en suite bedrooms, leading into the master bedroom, offering an elegant walk-in wardrobe and a fabulous bathroom with some of the best panoramic sea views on the Costa del Sol. On the lower level, you will find features such as a vast entertainment room, a billiard and cinema room, accompanied by two en suite bedrooms and a staff lounge. The property comes with an 11-car garage, a spa area with an indoor pool, a sauna and a Turkish bath, and a fully equipped gym. The property also offers features such as 40-centimetre thick walls with double insulation, electric underfloor heating in the bathrooms, waterborne

+34 951 123 083 | +44 (0)330 179 8687 | info@idiliqestates.com Local 28, Edificio D, Centro de Negocios Puerta de Banús, N-340, Km 175, 29660 Nueva Andalucía

# IDILIQ

ESTATES

underfloor heating throughout the rest of the property, master-class carpentry, a water purification system, double glazed security windows, solar panels, domotics, an embedded sound system, a security system, and a commercial standard control room.



# IDILIQ

ESTATES



# IDILIQ

ESTATES

