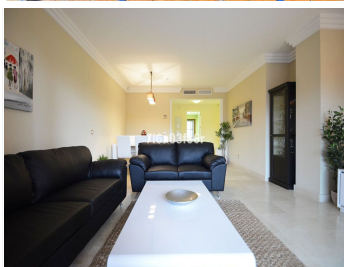
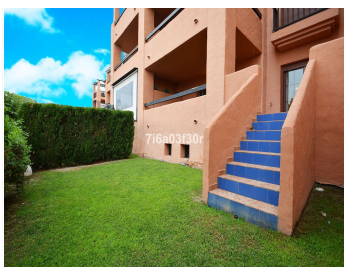


IDILIQ

ESTATES



R2727077

📍 Benahavís

REF# R2727077 349.000 €

BEDS

2

BATHS

2

BUILT

95 m²

PLOT

20 m²

TERRACE

15 m²

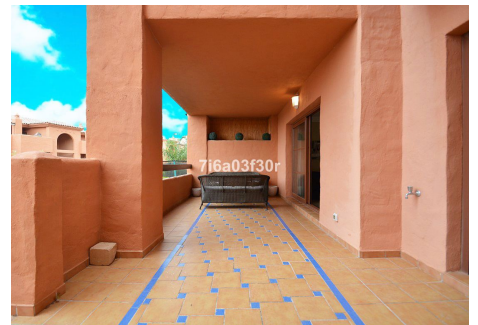
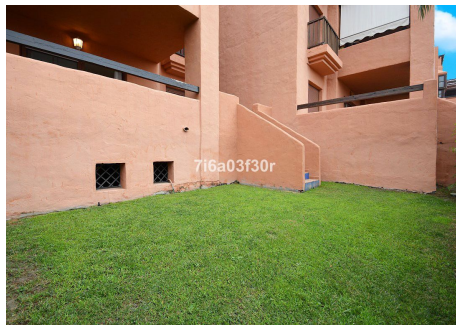
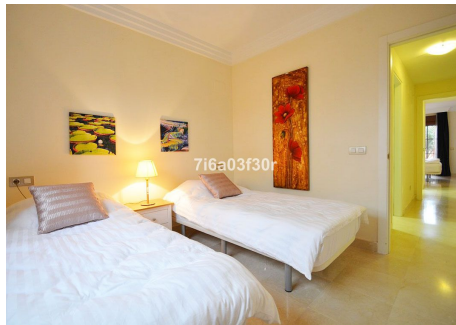
Lovely 2 bedroom ground floor apartment in the very popular complex Gazules del Sol, close to Benahavis village on Costa del Sol PROPERTY This is a great ground floor apartment with a private garden in a luxurious development. Features include Ivory Cream Marble trough out, fully equipped kitchen with Siemens, washing Machine & Tumbler dryer from Siemens, air Conditioning and video entry .The urbanisation has an indoor heated pool, jacuzzi, 2 saunas, gymnasium, 4 outdoor pools, children pool, 24 h Security and subterranean parking. COMPLEX: The development is set in 20,000m2 of natural gardens with plenty of space for outdoor activities, lea sure and fun. There are five swimming pools, children's pool, paddle tennis court, fully equipped gym, sauna and Jacuzzi, it is a private, gated community with automated entry system and a 24/7 manned security office. Gazules del Sol is surrounded by a variety of excellent golf courses and is also very close to the glamorous resorts of Puerto Banus and Marbella. AREA: It is situated between Marbella and Estepona, and its route offers spectacular views. It also has a course for practicing (the largest in Spain). Atalaya Golf have held and continue organizing professional tournaments and Pro-Ams. All holes are lined by eucalyptus and pine-trees-and the practice facilities are excellent. The streets are wide and low slopes, the greens are quite fast and located mainly in more elevated land . It has several putting green and practice areas. The clubhouse was built like Swiss chalets. Atalaya Golf, located on the

+34 951 123 083 | +44 (0)330 179 8687 | info@idiliqestates.com Local 28, Edificio D, Centro de Negocios Puerta de Banús, N-340, Km 175, 29660 Nueva Andlucia

IDILIQ

ESTATES

road leading to Benahavis. Benahavis stands 500 metres above sea level, 7 kilometres inland from the Guadalmina Golf Course. It is on top of the highest mountain in the locality and anyone wishing to make the climb to visit the ruins and experience the truly sensational views of the coastline should be prepared for a strenuous but rewarding effort. This village has the highest concentration of high class restaurants in the region and draws visitors by the thousands who come simply to savour the cuisine. It also has an extremely high percentage of resident expatriates. In spite of this, it has remained remarkably unspoiled, with winding narrow streets ill-suited to cars. SUMMARY: Ground Floor Apartment, Benahavis, Costa del Sol. 2 Bedrooms, 2 Bathrooms, Built 95 m², Terrace 15 m². Setting : Country, Close To Golf, Close To Shops, Close To Town, Close To Schools, Close To Forest, Urbanisation. Orientation : South, South West. Condition : Excellent, Good. Pool : Communal, Indoor. Climate Control : Air Conditioning, Hot A/C, Cold A/C. Views : Garden. Features : Covered Terrace, Lift, Fitted Wardrobes, Near Transport, Private Terrace, Gym, Paddle Tennis, Tennis Court, Utility Room, Ensuite Bathroom, Marble Flooring, Barbeque, Double Glazing. Furniture : Fully Furnished, Optional. Kitchen : Fully Fitted. Garden : Communal. Security : Gated Complex, Entry Phone, 24 Hour Security. Parking : Underground. Utilities : Electricity, Drinkable Water. Category : Holiday Homes, Resale.



IDILIQ

ESTATES

