



R2449280

📍 Monda

REF# R2449280 1.300.000 €

BEDS

7

BATHS

7

BUILT

799 m<sup>2</sup>

PLOT

49953 m<sup>2</sup>

TERRACE

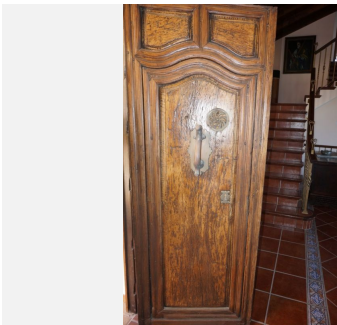
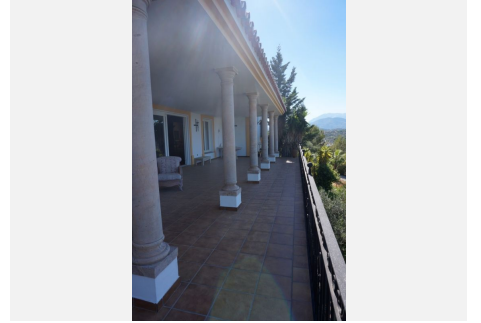
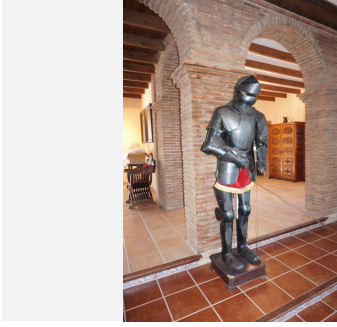
192 m<sup>2</sup>

Stunning Finca situated on 50.000 sqm. of private and fenced property. Panoramic views to the village of Monda, mountains and surrounding area. Located just minutes to the village centre with tarmac road access in very private area. Distributed on 3 levels as follows: Ground floor: Spacious living room with high ceiling, large fireplace, dining room and access to the porch. Fully fitted dining kitchen with several windows and access to the porch. WC. Laundry. Master bedroom with dressing room and large bathroom with shower and bath en suite. Guest Bedroom, fully independent, with en suite bathroom and access to the beautiful patio. Upstairs: 3 large bedrooms with fitted wardrobes and access to their respective balconies with panoramic views. 2 bathrooms. Basement: Guest room, large office/sala, lounge and bodega. Exterior: Surrounded by terraces, barbecue house, carport and ample parking. Property in good condition with double glazed windows, TV, air conditioning and heating, gas central heating. rustic floors, wooden beams, water deposit of 80.000 liters. Automatic entrance and automatic irrigation system. Absolute privacy. Although the property is of a recent build, there are many antique details - such as 18th century doors and roman columns. Fully fenced plot of 49.953 m2 with own well water and plenty of olives trees and built size 799 m2.



# IDILIQ

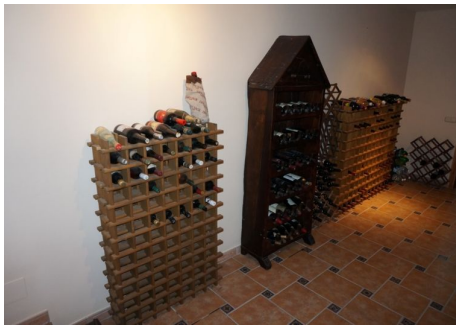
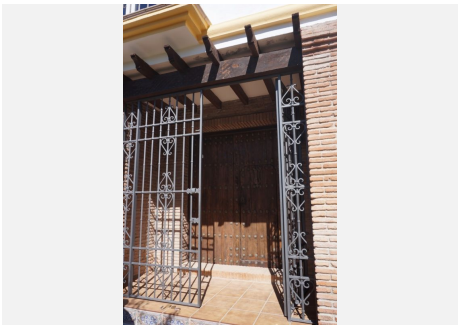
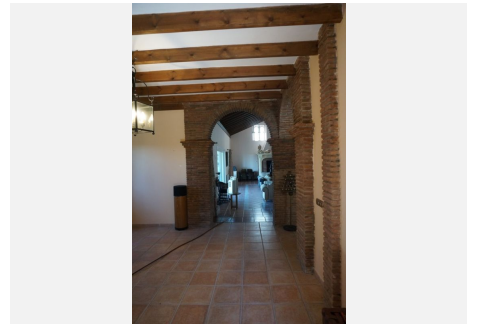
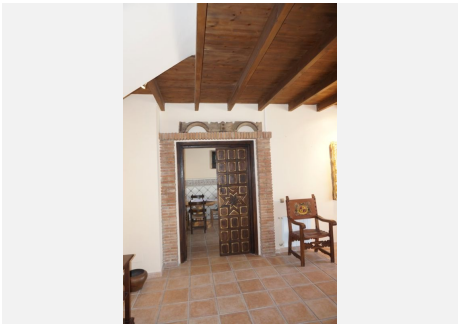
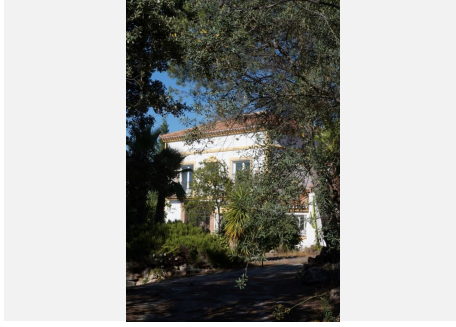
ESTATES





# IDILIQ

ESTATES





# IDILIQ

ESTATES

